

## A network printing guide !

A solution to print through a network-printer in MorphOS !

Some people have reported problems about printing within MorphOS from certain software. I have for myself investigated to find a solution to print from MorphOS and also be able to share the same printer with other computers in my network. I thought perhaps this small hints how I set up this could be helpful also for other, so I made this small guide.

First step to do is to get the software NetParLpr, from Aminet for instance.

<http://www.aminet.net/comm/tcp/NetParLpr.lha>

This is the software that let you connect to the printerserver in your network.

From this archive you have to copy netpar.device into Sys:devs, a good choice is to choose the 68060 version.

You also have to copy NetParSpool into Sys:Devs, the same here, the 68060 version is a good choice.

When you have done this, you have to create som environments variables. You can use any texteditor of your choice to create **this**.

These have to resist into a drawer NetPar in Envarc:

The following is my own suggestions, lets try.

In NetPar goes following variables

Spooldir [Ram:T]

Then another drawer into NatPar, which will be the unit-number of your printerserver. Yes you can have several in your network. The first you would like to name 0, so create a drawer with the name 0.

And... into 0

PrinterHOST [NetGear]

PrinterNAME [P1]

JobNAME [lpd]

QueryNAME [Epson]

When this is finished, the installation of netpar is ready to use.

Now you have to edit the file PRT which resist in Mossys:devs/DOSDrivers

As I know people behind MorphOS, doesn't recommend changing anything in the Mossys assign, you can rename this file instead of editing it, and create the PRT in Sys:Devs/DOSDrivers instead.

Here is how the file PRT should look like;

>-----<

```
StackSize= 4096
Priority = 5
GlobVec = -1
Handler = MOSSYS:L/port-handler
Startup = "DEVICE=netpar.device UNIT=0 TYPE=printer"
#
```

>-----<

This means you now are using netpar.device when sending anything to prt:

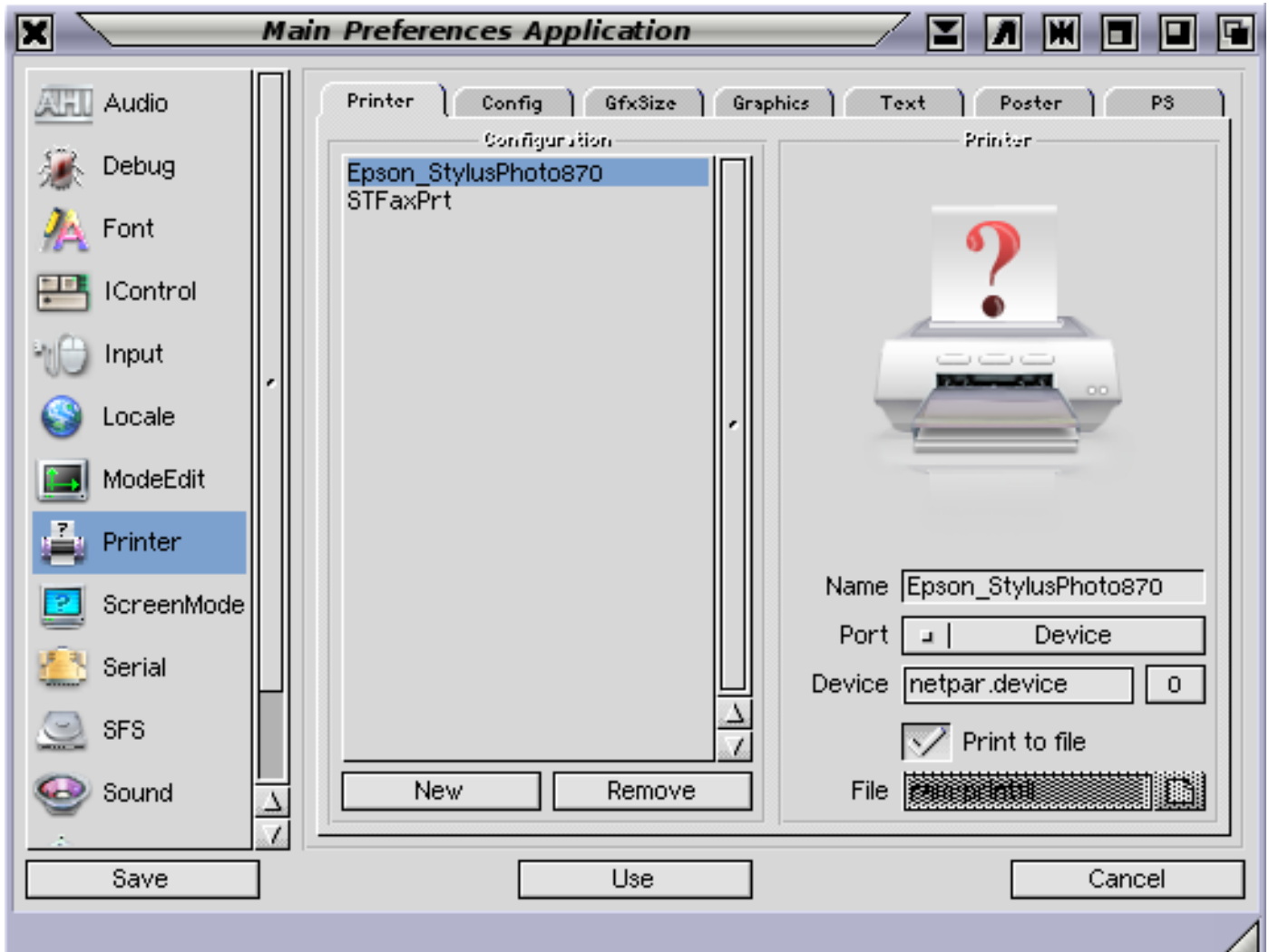
Next step is to let your TCP-stack to know which IP-number the hostname NetGear is connected. As I use MiamiDX myself, I have added this into **Database - hosts** in MiamiDX.

```
IP      - Name  - Aliases
192.168.1.10 - NetGear - NetGear
```

Note, instead in doing this you could put the IP-number in Hostname into PrinterHOST above. However it might be easier to use and remember hostnames instead of IP-addresses.

Now finally we have to let TurboPrint to know that printout should be sent to netpar.device.

See this illustration !



And here comes also a note again;

But first I also would like to mention, that the setup I have created through this means I can print from nearly all software that's possible to print from. Software that just send output to prt: will send it right to the printer. I can for instance also print from CygnusEd without problem, or from shell.

As all software doesn't seem to like netpar.device, I have chosen to set TurboPrint to print to a file instead of directly to netpar.device as you can see from the illustration. For instance Pagestream seems not to like netpar.device.

For sending the file created by TurboPrint to the printer, I did the create this small script.

```
>----<
```

```
run >nil: Copy ram:printfil prt:  
run >nil: Delete ram:printfil
```

```
>----<
```

I call this script print, and have put it into Sys:s, don't forget to set the protection-bit 's' to this file, else you have to use the command Execute for running the script.

You can set this protection-bit like this in shell;

```
> protect S:print s add
```

Hope this little guide might be of use for someone. A printerserver is really good, especially if you have more than one computer you would like to use the printer from.

Enjoy MorphOS :-)

And a finally note, perhaps this above will work also in AmigaOS 4, I haven't figured that out yet. It works also fine in AmigaOS on a classic Amiga.

Gunne Steen - GGS-Data