

# **WebSPIRS™ Administrator's Guide**

**SilverPlatter®**

**Version 4.3**

## ***WebSPIRS™ Administrator's Guide***

Copyright © 2000 SilverPlatter International N.V.

All rights reserved.

SilverPlatter, ERL, and SilverLinker are registered trademarks of SilverPlatter International N.V. licensed to SilverPlatter Information, Inc.

AIX and IBM are registered trademarks of International Business Machines Corporation.

Microsoft, MS-DOS, Windows, Windows 95, Windows 98, and Windows NT and Windows 2000 are registered trademarks of Microsoft Corporation.

Portions Copyright 1984-1990 FairCom Corporation. All rights reserved.

Solaris is a trademark of Sun Microsystems, Inc.

UNIX is a registered trademark of The Open Group.

MEDLINE®, MEDLINE® Professional, and MEDLINE® Advanced are copyright 1988 to present by National Library of Medicine. All rights reserved

December 2000 (Revised)

---

### **SilverPlatter Information, Inc.**

100 River Ridge Drive

Norwood, MA 02062-5026, USA

TEL: 781-769-2599

FAX: 781-769-8763

Web site: [www.silverplatter.com](http://www.silverplatter.com)

### **SilverPlatter Information, Ltd.**

Merlin House, 20 Belmont Terrace

Chiswick, London, W4 5UG, England

TEL: +44 (0) 20-8585-6400

FAX: +44 (0) 20-8585-6640

---

## Table of Contents

<b>Chapter 1 About This Guide</b> .....	<b>1-1</b>
Introduction .....	1-1
Using and Printing the Administrator's Guide .....	1-1
Additional WebSPIRS 4.3 Documentation .....	1-2
<b>Chapter 2 WebSPIRS Overview</b> .....	<b>2-1</b>
What Is WebSPIRS? .....	2-1
How WebSPIRS Communicates with ERL .....	2-3
<b>Chapter 3 WebSPIRS Requirements</b> .....	<b>3-1</b>
WebSPIRS System Requirements .....	3-1
Downloading the WebSPIRS Software Package .....	3-2
Required ERL Server Information .....	3-3
<b>Chapter 4 Installing WebSPIRS</b> .....	<b>4-1</b>
Changes in WebSPIRS 4.3 .....	4-1
Installing Over an Earlier Version of WebSPIRS .....	4-1
Installing WebSPIRS 4.3 for Solaris and Red Hat Linux .....	4-2
Installing WebSPIRS 4.3 for Windows NT and Windows 2000 .....	4-5
Installing Alternative Language versions of WebSPIRS .....	4-7
The WebSPIRS Directory Structure .....	4-12
The webspirs/bin Files .....	4-14
Connecting to the ERL Server .....	4-15
Checking Users can View Graphics .....	4-17
<b>Chapter 5 Start and Stop WebSPIRS</b> .....	<b>5-1</b>
Starting and Stopping WebSPIRS for Solaris and Red Hat Linux .....	5-1
Starting and Stopping WebSPIRS for Windows NT/2000 .....	5-2
Connecting to WebSPIRS with a Browser .....	5-3
<b>Chapter 6 Configuring WebSPIRS</b> .....	<b>6-1</b>
Introduction .....	6-1
Additional Configuration Options in WebSPIRS 4.3 .....	6-2
Introduction to Configuring WebSPIRS for Different Users .....	6-2
Creating a Special WebSPIRS Configuration .....	6-3
Creating a User-Specific WebSPIRS Configuration Based on ERL Username .....	6-6
Bypassing the WebSPIRS Login Page .....	6-7
Suggesting a Username at the Login page .....	6-7
Auto-Opening Databases (Bypassing the Database Selection Page) .....	6-8

Jump-starting users into WebSPIRS	6-11
IP Address-based Configuration	6-11
Changing the Appearance of WebSPIRS with Themes	6-13
Setting Up the E-mail Records Feature	6-15
Enabling the SDI (Selective Dissemination of Information) Feature	6-17
Enabling SDI Alerts	6-20
Providing Library Holdings Information	6-22
Enabling Document Delivery	6-28
Setting Default Fields for Display, Print, Save, and E-mail	6-31
<b>Chapter 7 Configuration Reference</b>	<b>7-1</b>
New configuration options for WebSPIRS 4.3	7-1
webspirc_user.cfg	7-3
theme.cfg	7-20
webspirc.net	7-24
erlclnt.cfg	7-25
webspircd.cfg	7-25
bl.cfg, cisti.cfg, ill.cfg	7-29
<b>Chapter 8 Troubleshooting</b>	<b>8-1</b>
"Access Denied" When You Try to Start the WebSPIRS NT/2000 Service	8-1
The Server Stops Responding with Multiple Simultaneous Users	8-2
Trouble Starting, Restarting or Stopping WebSPIRS (Solaris and Red Hat Linux)	8-2
Trouble Opening WebSPIRS with Netscape Navigator	8-2
Pages Not Loading Completely/JavaScript Errors Because of Bad Modem Connection	8-3
Port Conflict Message on WebSPIRS Start-up	8-3
Complete WebSPIRS Page Not Displayed (Internet Explorer Only)	8-4
Pressing Login Button, No Response	8-5
Table of Contents Not Displayed for a Full-Text Database	8-5
<b>Chapter 9 Technical Support</b>	<b>9-1</b>
Contacting SilverPlatter	9-1

# About This Guide

- Introduction
- Using and Printing the Administrator's Guide
- Additional WebSPIRS 4.3 Documentation

## Introduction

This *WebSPIRS 4.3 Administrator's Guide* provides detailed information about installing and configuring WebSPIRS 4.3 for UNIX/Linux and Windows NT/2000 at your local site.

**NOTE:** Configuration options that are new in WebSPIRS 4.3 are listed at “New configuration options for WebSPIRS 4.3” on page 7-1. You should also read the Release Notes for important information about other changes in WebSPIRS 4.3.

For information on searching with WebSPIRS, refer to the WebSPIRS Online Help System after you install and connect to WebSPIRS.

## Using and Printing the Administrator's Guide

This *Administrator's Guide* is available in two formats:

- A set of HTML files. You can view and print these files from within your browser. They are installed when you install the WebSPIRS software and are in the **webspirlurl/doc** directory. Start with **wsig\_toc.htm**. For the most recent version of this guide, you should check the SilverPlatter web site: <http://www.silverplatter.com>.

- A fully hyperlinked document in PDF format. If you want to print the entire document, the PDF version is quicker to print, and easier to use than the HTML files. You can download the PDF file when you download the WebSPIRS software, or you can get it from the SilverPlatter web site: <http://www.silverplatter.com>.

## Additional WebSPIRS 4.3 Documentation

In addition to this *Administrator's Guide*, the WebSPIRS 4.3 documentation set also includes the following:

### Release Notes



These outline the system requirements and installation instructions, along with the changes, and any known issues for the current release. You download this file along with the WebSPIRS software package.

### Readme file

These contain a summary of the user assistance available: Release Notes, *Administrator's Guide*, and online help. This file is distributed within the software package at **webspirs\bin**.

### WebSPIRS Online Help System

The online Help system provides context-sensitive and overview help on WebSPIRS features and searching. You can access the online Help as soon as you install and connect to WebSPIRS with a browser:

- For context-sensitive help, click the  buttons that appear next to the major screen elements on each WebSPIRS page.
- For overview help, click the  button on the WebSPIRS toolbar.

### WebSPIRS QuickStart Guide

This short guide gives users a short introduction to using WebSPIRS. You can download it (in HTML or PDF format) at the same time as you download the WebSPIRS software, or you can get it from the SilverPlatter web site: <http://www.silverplatter.com>.

### WebSPIRS Quick Reference Card

You can download and print this single-page PDF document from the SilverPlatter web site: <http://www.silverplatter.com>.

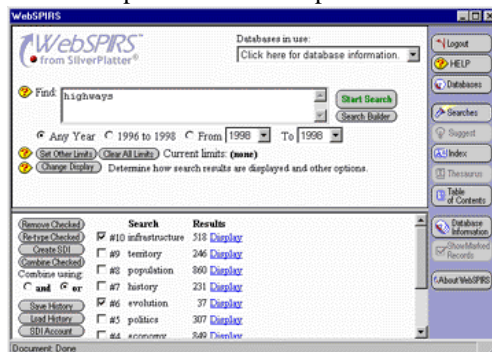
# WebSPIRS Overview

- What Is WebSPIRS?
- How WebSPIRS Communicates with ERL

## What Is WebSPIRS?

WebSPIRS is SilverPlatter's Information Retrieval System for the World Wide Web. With it, you can provide access to your ERL network or SilverPlatter's Internet Subscription Service over the web, allowing your users to search SilverPlatter databases from anywhere -- local workstations, home computers, dormitory rooms, faculty offices, remote sales offices, etc. All your users need is one of the WebSPIRS-Compatible Web Browsers (see "WebSPIRS-Compatible Web Browsers" on page 3-2) and an internet connection.

WebSPIRS 4.3 incorporates frames and JavaScript to give users an interface that looks and performs like a sophisticated search client.



## What Users Can Do

Once connected, users can:

- Select and search databases using current SilverPlatter search tools, including database indexes, thesauri, the Suggest feature, etc.
- Display, mark, save, print and e-mail retrieved records
- Save their search history to use again in future sessions
- Link directly to full-text documents on publishers' web sites  
(**NOTE:** This feature is only available if your site subscribes to SilverLinker-enabled databases, and has installed the SilverLinker database. For more information about SilverLinker, visit <http://www.silverplatter.com/silverlinker/> or refer to the *ERL Administrator's Manual*.)
- Get online help on searching or the particular databases they are using

## What Administrators Can Do

The WebSPIRS interface is highly configurable, allowing you to customize WebSPIRS to suit your particular environment. For instance, you can:

- Provide specialized WebSPIRS configurations for different users (based on ERL username or IP address)
- Let users bypass the *Login* page
- Let users bypass the *Database Selection* page and open specific databases automatically
- Change the appearance of WebSPIRS using various themes
- Enable optional features such as SDI (Selective Dissemination of Information), SDI Alerts, and Document Delivery
- Link to your web-based online catalog for holdings information
- Set the default fields for display, print, save, and e-mail functions

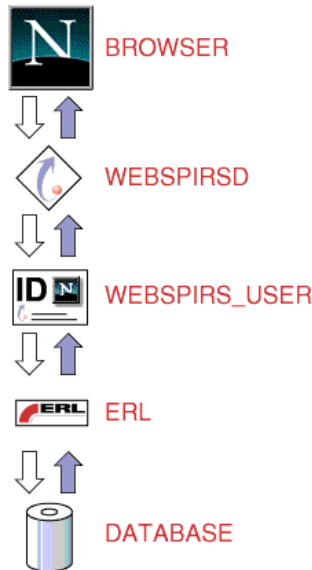
See Chapter 6, “Configuring WebSPIRS” for more information.



## How WebSPIRS Communicates with ERL

WebSPIRS consists of two processes, **webspirsd** and **webspirs\_user**, which move information back and forth between the user's web browser and the ERL database server.

Here's a brief overview of how WebSPIRS communicates between the user's web browser and the databases they are searching:



1. The user submits a search request or clicks a button on the WebSPIRS toolbar.
2. The request goes to **webspirsd**:
3. If the request requires a connection to a database (such as search request), it is sent to the **webspirs\_user** process.
4. If the request is for a file (for example, a WebSPIRS button graphic), it is processed by the **webspirsd** process.
5. The **webspirs\_user** process takes the request from **webspirsd** and communicates with the ERL server. The ERL server, in turn, communicates with the appropriate databases to retrieve

records, perform a search, etc.

6. The **webspirs\_user** process then passes the response back to **webspirsd** which passes it back to the browser where it is displayed.



# WebSPIRS Requirements

- WebSPIRS System Requirements
  - WebSPIRS-Compatible Web Browsers
- Downloading the WebSPIRS Software Package
- Required ERL Server Information

## WebSPIRS System Requirements

These are the hardware and software requirements for WebSPIRS 4.3

Computer:	Varies by Operating System
Memory:	2MB plus 4MB per user
Operating Environment:	Red Hat Linux, Solaris, Windows NT and 2000. External Web Server software IS NOT required
Hard Disk Space:	10MB
Workstation Requirements:	See “WebSPIRS-Compatible Web Browsers” on page 3-2
ERL Server Requirements:	ERL server 4.06 or higher. SilverPlatter recommends that WebSPIRS and ERL be run on different machines.
CD ROM Drive:	Not applicable
Floppy Drive:	Not required
Mouse:	Yes

Network Protocols: TCP/IP

Video: Standard

For the latest information about requirements for WebSPIRS 4.3, see the SilverPlatter web site at:

<http://www.silverplatter.com/erl/erlgatewayreq.htm>

## WebSPIRS- Compatible Web Browsers

WebSPIRS 4.3 has been tested using browsers running on the following platforms:

- Netscape 4.x (32-bit) for Windows 95, Windows 98, Windows NT (4.0 or higher), or Windows 2000, and for the Macintosh. **NOTE:** We recommend Netscape 4.08 or later for a 68K Macintosh. See <http://www.netscape.com/>

**NOTE:** Netscape 6 is not currently supported.

- Microsoft Internet Explorer 4.0 (32-bit) for Windows 95 Windows 98, Windows NT (4.0 or higher), or Windows 2000 only. (**IMPORTANT:** Internet Explorer for the Macintosh is not a supported web browser.) See <http://www.microsoft.com/>

To insure optimal performance of the WebSPIRS 4.3 gateway, we recommend that it be used with browsers running on these platforms. You may experience problems using browsers on other platforms such as Windows 3.1 or X Windows.

**NOTE:** The browser's JavaScript capabilities must be enabled at all times. Java must be enabled only if you subscribe to SilverPlatter full text databases that use the Table of Contents feature.

**NOTE:** Because WebSPIRS 4.3 is not CGI-based, it does not require a separate web server to run. However, using WebSPIRS 4.3 will not prevent you from using your preferred web server for all your other web-based applications.

## Downloading the WebSPIRS Software Package

The WebSPIRS 4.3 software package is available from SilverPlatter's FTP site (<ftp://ftp.silverplatter.com>).

**To download the WebSPIRS 4.3 software package:**

1. Log on to your Internet account.
2. At the FTP prompt, type **open ftp.silverplatter.com**.
3. Type the username and password supplied by SilverPlatter.
4. Change to the **software/webspirs/<platform>** subdirectory (Red Hat Linux, Solaris, Windows 2000 or NT) that corresponds to your platform. For example, type:

```
cd software/webspirs/Solaris
```

(Note the use of upper and lower case letters.)

5. Download the WebSPIRS software and related files to the appropriate directory on your machine. For example, type:

```
get ws43  
get relnotes.txt  
get w43adgdr.pdf
```

Once you download the WebSPIRS software package, you are ready to install WebSPIRS. See Chapter 4, "Installing WebSPIRS" for more information.

## Required ERL Server Information

You will be asked to provide the following ERL server information during the WebSPIRS installation:

- Hostname or IP address of the ERL server you want WebSPIRS to access.
- **(UNIX only)** The user account name and group name that you want to own WebSPIRS. (You can use existing user account and group names or you can create new ones.)



# Installing WebSPIRS

- Changes in WebSPIRS 4.3
- Installing Over an Earlier Version of WebSPIRS
- Installing WebSPIRS 4.3 for Solaris and Red Hat Linux
- Installing WebSPIRS 4.3 for Windows NT and Windows 2000
- The WebSPIRS Directory Structure
- The webspirs/bin Files
- Connecting to the ERL Server

## Changes in WebSPIRS 4.3

There are some configuration changes in WebSPIRS 4.3, which allow you to change the way WebSPIRS opens and runs. These changes are listed in the Release Notes, and the configuration options are described at “New configuration options for WebSPIRS 4.3” on page 7-1.

## Installing Over an Earlier Version of WebSPIRS

**NOTE:** You should also check the Release Notes that came with your software for any additional information about installing over an earlier version.

If you install WebSPIRS over an earlier version, WebSPIRS puts a copy of your existing configuration files (**webspirs\_user.cfg**, **theme.cfg**,

**webspirs.net**, **erlclnt.cfg**, **webspirsd.cfg**, **bl.cfg**, **cisti.cfg** and **ill.cfg**) into a directory **webspirs/oldconfig**, and puts new, default versions of the files into the **webspirs/bin** directory. Any existing `<username>.cfg` files are also backed up when you install a new version of WebSPIRS.

There were a number of additional configuration items in WebSPIRS 4.2, and more in WebSPIRS 4.3. In view of this, we recommend that you use the new **webspirs\_user.cfg** file, and edit it to change any of the settings to match the settings you had in your old file.

If you subsequently install WebSPIRS again, any files in **webspirs/oldconfig** are overwritten by copies of the configuration files that WebSPIRS finds in **webspirs/bin**

## Installing WebSPIRS 4.3 for Solaris and Red Hat Linux

**NOTE:** When you install WebSPIRS you are asked which language version you wish to install as the default. See “Installing Alternative Language versions of WebSPIRS” on page 4–7 for more information.

### ***To install the software:***

1. Log in as *root* on your machine.
2. Change to the directory that contains the WebSPIRS software package you downloaded.
3. Use the **chmod** command to make the package file executable. For example, enter `chmod u+x ws43`.
4. Enter `./ws43` to execute the file. When the WebSPIRS installation instructions appear, press **[Enter]** to continue or **[Control]-[C]** to quit the installation program.

### ***To read and accept the license agreement:***

1. When the SilverPlatter License Agreement appears, press the spacebar to page through the agreement or **[Q]** to go to the end. To continue the installation process, you must agree to the statement at the end of the license agreement:

```
Do you agree with the preceding License
Agreement? (Yes/No)
```



2. Type `Yes` to continue the installation. (**NOTE:** You must type the entire word `Yes` to continue the installation.)

**To make initial installation settings:**

1. The screen now asks:

```
Enter the name of an existing user account to
own the WebSPIRS files [www]
```

You must assign ownership of the WebSPIRS files to an existing user account. For example, press **[Enter]** to accept the default (`www`) and give ownership of WebSPIRS to the user `www`.

2. The next screen question is:

```
Enter the name of the group you want to own
WebSPIRS.
```

You must specify an existing group. For example, press **[Enter]** to accept the default (`www`) and give ownership of WebSPIRS to the group `www`.

3. The next screen question is:

```
Enter the directory where you want to install
WebSPIRS
```

Press **[Enter]** to accept the default installation directory (**`/user/local/etc/webspirs`**) or type the complete path to the directory where you want WebSPIRS installed. If the directory does not exist, the installation program will create it for you.

4. The next screen question is:

```
Do you want WebSPIRS to automatically start
when this server starts?
```

If you press **[Enter]** to accept the default (`Yes`), WebSPIRS will start when you start the server. If you type `N`, you will have to start WebSPIRS manually.

5. Once you complete these entries, WebSPIRS displays the selections you've made so far.

Enter `Y` (`Yes`) to accept the entries and complete the installation, or type `N` (`No`) to change any of your entries.

**To make initial configuration settings:**

1. Enter a port number (80 — the registered HTTP port number — or any number above 1024) for WebSPIRS or press **[Enter]** to accept the default port number (8590). (**NOTE:** The port number must be a unique number not used by any other process.)
2. Enter the hostname (or IP address) of the primary ERL server you want WebSPIRS to access. The default hostname supplied by the installation program is **erl2.silverplatter.com**, which is SilverPlatter's guest server. (**NOTE:** You can always change the hostname or add additional servers in the **erlclnt.cfg** file. See “Connecting to the ERL Server” on page 4–15 for more information.)
3. At the next prompt, you can enter an e-mail address for user comments about WebSPIRS. (**NOTE:** This is an optional setting.)

If you enter an e-mail address for user comments, you must also enter the link text that will appear on the WebSPIRS interface.

4. The next prompts ask you to enter e-mail addresses and link text for an optional user support link.

Support E-mail Link	Specify an e-mail address for user support questions and the link text to appear on the WebSPIRS interface.
---------------------	---

Comments E-mail Link:	Specify an e-mail address for user comments and the link text to appear on the WebSPIRS interface.
-----------------------	--

5. Once you complete these entries, WebSPIRS displays your selections. If your entries are correct, enter Y (Yes) to accept them, or N (No) to make changes.
6. The final installation screen displays the complete path to the WebSPIRS directory.

Once this basic installation is complete, you can start WebSPIRS. See Chapter 5, “Start and Stop WebSPIRS” for more information.

## Installing WebSPIRS 4.3 for Windows NT and Windows 2000

**NOTE:** When you install WebSPIRS you are asked which language version you wish to install as the default. See “Installing Alternative Language versions of WebSPIRS” on page 4–7 for more information.

### ***To install the software:***

1. Change to the directory that contains the WebSPIRS software package you downloaded.
2. Run the package file **ws43.exe** to unpack the installation files and start the WebSPIRS Setup Wizard.

### ***To read and accept the license agreement:***

1. From the *Welcome* screen, click the **Next** button to proceed to the License Agreement.
2. Click **Yes** to agree to the terms of the license agreement.

### ***To make initial installation settings:***

1. From the *Choose Destination Location* screen, specify the destination folder for WebSPIRS (**C:\Program Files\SilverPlatter Information\WebSPIRS** is the default), then click **Next**.
2. From the *Select Components* screen, select the WebSPIRS components you want to install, then click **Next**.
  - **Program Files** includes all the files needed to run WebSPIRS, including online help.
  - **WebSPIRS Administrator's Guide** includes the *WebSPIRS 4.3 Administrator's Guide* (this guide).
3. From the *Select Program Folder* screen, specify a folder name for the WebSPIRS icons (WebSPIRS 4.3 is the default), then click **Next**.
4. Before the files are copied, your selections are displayed. You can make changes at this time by clicking **Back** to return to the information you want to change.

5. If the information you entered is correct, click **Next** to install WebSPIRS. The installation program copies the files to the directory you specified.
6. Choose a valid port number (80 — the registered HTTP port number — or any number above 1024) for WebSPIRS. (The default is 8590.) This number must be unique to WebSPIRS and not used by any other process.
7. Enter the hostname (or IP address) of the primary ERL server you want WebSPIRS to access. By default, WebSPIRS points to **erl2.silverplatter.com**, SilverPlatter's Guest Server. (**NOTE:** You can always change the hostname or add additional servers in the **erlclnt.cfg** file. See “Connecting to the ERL Server” on page 4–15 for more information.)
8. On the next screens you can specify e-mail addresses to receive user support questions and comments.

(**NOTE:** These two are optional features. To bypass them, leave the fields blank and click **Next**.)

Support E-mail Link    Specify an e-mail address for user support questions and the link text to appear on the WebSPIRS interface, then click **Next**.

Comments E-mail Link:    Specify an e-mail address for user comments and the link text to appear on the WebSPIRS interface, then click **Next**.

WebSPIRS for Windows NT and Windows 2000 uses the Blat e-mail utility to send e-mail. If the WebSPIRS Setup program does not detect Blat on your system, it installs it. For information about Blat, read **blat.txt** in the **/webspirc/bin** directory or visit the Blat web site <http://gepasi.dbs.aber.ac.uk/softw/blat.html>.

WebSPIRS asks you to specify the SMTP server that Blat will use, and the return e-mail address to use in the **From:** field when WebSPIRS e-mails records.

9. A message box appears, asking if you want WebSPIRS to start automatically when the server starts.
  - Click **Yes** if you want WebSPIRS to start automatically with the server.

- Click **No** if you want to start WebSPIRS manually.

**NOTE:** You can change startup status at anytime through the Windows NT/2000 Services dialog box. See Chapter 5, “Start and Stop WebSPIRS” for more information.

10. On the last screen, click **Finish** to complete the installation process.

Once this basic installation is complete, you can start WebSPIRS. See Chapter 5, “Start and Stop WebSPIRS” for more information.

## Installing Alternative Language versions of WebSPIRS

This section contains the additional information you need if you want to install an alternative language version of WebSPIRS.

- Making additional alternative language versions available to users
- Changing the language used for the language check boxes
- Changing the language in the Document Delivery forms

When you start to install the 4.3 software, WebSPIRS asks you to choose the English, French, German, or Spanish version as the preferred language.

WebSPIRS installs all the language templates, using the language you selected as the default, so that starting WebSPIRS with the normal WebSPIRS URL:

**http://<hostname>:<port\_number>**

accesses WebSPIRS in the language you specified.

### **Making additional alternative language versions available to users**

The previous section explained how to set up a default language version.

You can also make additional language versions available to specific users. There are two ways you can do this. You can use both methods on the same WebSPIRS installation.

**Method 1: Create a user-specific WebSPIRS configuration**

This means that users all access WebSPIRS using the same URL, but the language they see is set according to their user name.

Follow the instructions in “Creating a User-Specific WebSPIRS Configuration Based on ERL Username” on page 6-6 to set up a user-specific configuration.

In each `<username>.cfg` file you create, add an entry:

```
www.connection.template_directory=
```

adding the path to the template directory for the language you want that username to access.

**Method 2: Create a WebSPIRS configuration in a separate directory**

This means that users access WebSPIRS using the specific URL for their chosen language.

Follow the instructions in “Creating a Special WebSPIRS Configuration” on page 6-3 to set up a different configuration directory for each language you want users to access.

In the `webspirs_user.cfg` file created in each directory, edit the entry:

```
[WWW.CONNECTION]  
template_directory=
```

adding the path to the template directory for the language you want to access.

Your users access the chosen language using a URL formed like this:

**`http://<hostname>:<port_number>/<language_directory>/?`**

When you set up a new directory in this way, you automatically create a **`/docdeliv`** subdirectory within the new directory. This is not the **`/docdeliv`** directory you will use if you set up the Document Delivery feature, (as described below) so you can delete this new **`/docdeliv`** directory.

## Changing the language used for the language check boxes

There are five language check boxes under the **Find:** prompt on the main WebSPIRS search page. Users select these if they want to find only those records that contain an entry in the language field (LA) that matches any of the languages they select. (Note that a check box is only displayed if the open databases contain at least one LA= field containing an entry for that language.)

The labels for these check boxes are set in the [ SP . LANGUAGE ] section of **webspirs\_user.cfg**. WebSPIRS displays the check boxes with labels in the language you specified as the default language when you installed WebSPIRS.

If you set up WebSPIRS so that your users can access different language versions from a single WebSPIRS installation (by creating a user-specific configuration, or a configuration in a separate directory) you must enter some additional settings to display the check box labels in another language, as explained in the next sections.

**NOTE:** for either method

You must include the options that use the English language names (`option1.p=English`, `option2.p=French`, and so on) because those are the names that are used in the LA= field in the databases.

### ***If you are setting up a user-specific configuration***

Add a section to each `<username>.cfg` you create, based on the following example which displays the boxes with French labels:

```
[ SP . LANGUAGE ]
option1.p=English
option2.p=French
option3.p=Spanish
option4.p=German
option5.p=Italian

option1.name.p=anglais
option2.name.p=français
option3.name.p=espagnol
option4.name.p=allemand
option5.name.p=italien
```

***If you are setting up a configuration in a separate directory***

Edit the [SP.LANGUAGE] section of **webspirs\_user.cfg**, based on the following example which displays the boxes with French labels:

```
{SP.LANGUAGE}
option1.p=English
option2.p=French
option3.p=Spanish
option4.p=German
option5.p=Italian

option1.name.p=anglais
option2.name.p=français
option3.name.p=espagnol
option4.name.p=allemand
option5.name.p=italien
```

**Changing the language in the Document Delivery forms**

The steps you need to follow to enable document delivery vary depending on the type of installation you have selected. (For more information about enabling document delivery, see “Enabling Document Delivery” on page 6-28.)

If you have chosen to provide more than one language by creating subdirectories in the **/bin** directory and creating a **webspirs\_user.cfg** file in each subdirectory (as set out at “Method 2: Create a WebSPIRS configuration in a separate directory” on page 4-8):

All you need to do is enable document delivery in each **webspirs\_user.cfg** file, by adding the following:

```
[DD]
root.spec.directory.p=./docdeliv_x
```

where **x** is one of **f**, **g** or **s**, depending on the language required. (Or just **docdeliv** for the English language version.)

To nominate a single document delivery service, add the following entry to the DD section:

```
provider.show.exclusive.p=provider.cfg
```

where **provider.cfg** is one of **ill.cfg**, **bl.cfg** or **cisti.cfg**.

If you have chosen to provide more than one language by creating **<username>.cfg** files in the **/bin** directory (as set out at “Method 1: Create a user-specific WebSPIRS configuration” on page 4-8):



1. Enable document delivery for the user by editing the `<username>.cfg` file in the `/bin` directory to contain the following:

```
root.spec.directory.p= ./docdeliv_x
```

where `x` is one of `f`, `g` or `s`, depending on the language required. (Or just `docdeliv` for the English language version.)

2. Create a directory with that username in the `users` subdirectory of the relevant `docdeliv` directory.

For example, for a French-speaking user called Claudette, you would have a file `claudette.cfg` in the `/bin` directory, and a directory `claudette` in the `docdeliv_f/users` subdirectory.

3. Copy the relevant providers files (`ill.cfg`, `bl.cfg` and `cisti.cfg`) from the relevant `docdeliv/providers` subdirectory to the directory for that username in the `users` directory.

In our example, you would copy the providers files from the `docdeliv_f/providers` subdirectory, to the `docdeliv_f/users/claudette` subdirectory.

## Adjusting the browser window size

Users of the French, German, or Spanish versions may notice some clipping of the contents by the browser window, particularly if they have chosen “large fonts” in their Windows settings, or have large fonts selected in their browsers.

They can enlarge the window manually to overcome this problem, or change their fonts settings to “small fonts”.

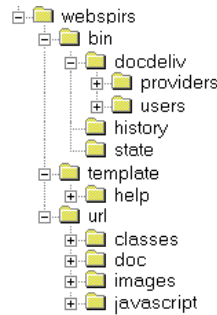
Alternatively, you can change the default window size, which is set in `webspirs\bin\theme.cfg`. The current settings in `theme.cfg` are:

```
[SP.WINDOW]
width.p=620
height.p=400
```

Any settings in `theme.cfg` override the ones in `webspirs_user.cfg`

## The WebSPIRS Directory Structure

The default WebSPIRS installation uses the following directory structure:



### webspirs/bin

The **bin** directory contains the WebSPIRS program files, including executables, supporting programs, and various configuration, log and text files. It includes three subdirectories:

- **bin/docdeliv** includes two subdirectories:
  - **bin/docdeliv/providers** stores configuration files for document delivery providers.
  - **bin/docdeliv/users** stores any customized document delivery configuration files you create for specific users.
- **bin/history** stores saved search histories. (Created the first time a user saves a search history.)
- **bin/state** stores state information, making it possible for WebSPIRS to retain settings for a particular search session. (Created the first time the WebSPIRS installation is used.)

### webspirs/oldconfig

If you install WebSPIRS over an existing version, WebSPIRS puts a copy of your existing configuration files (**webspirs\_user.cfg**, **theme.cfg**, **webspirs.net**, **erlclnt.cfg**, **webspirds.cfg**, **bl.cfg**, **cisti.cfg** and **ill.cfg**) into a directory **webspirs/oldconfig**, and puts new, default versions of the files into the **webspirs/bin** directory.

### webspirs/masters

The **masters** directory contains read-only backup copies of all the WebSPIRS templates. It includes one subdirectory:

- **masters/help** contains read-only backup copies of all the WebSPIRS online Help files.
- **NOTE:** If any of the template or help files become corrupted or lost, you can copy these backup files to the **webspirs/template** (or **webspirs/template/help**) directory.

## **webspirs/template**

The **template** directory contains all the templates used to create the WebSPIRS interface and perform WebSPIRS functions. It includes one subdirectory:

- **template/help** contains the WebSPIRS online Help files.

## **webspirs/url**

The **url** directory includes three subdirectories:

- **url/classes** contains the Java Class files used by WebSPIRS.
- **url/doc** contains this guide: the *WebSPIRS Administrator's Guide* (including graphics.)

**NOTE:** The most current version of the *WebSPIRS Administrator's Guide* is available online from SilverPlatter's web site (<http://www.silverplatter.com/>). Check in regularly to get guide revisions and updates.

- **url/images** contains all of the graphics used in the WebSPIRS interface.
- **url/javascript** contains the javascript (.js) files used in the WebSPIRS interface.
- **url/download** (Only if using Internet Explorer). Created the first time a user saves records using Internet Explorer.

## The webspirs/bin Files

File Name	Description
access.ico	“Access WebSPIRS” icon ( <b>Windows NT/2000</b> )
blat.txt	Documentation for the Blat E-mail utility ( <b>Windows NT/2000</b> )
blat.exe	Blat E-mail utility ( <b>Windows NT/2000</b> )
erlclnt.cfg	Configuration file that controls the connection to the ERL server(s) accessed by WebSPIRS
license.txt	The WebSPIRS License Agreement
mediatypes.cfg	Configuration file
readme.txt	A summary of the user assistance available
rnotes.ico	“Release Notes” icon ( <b>Windows NT/2000</b> )
sdirreg.cmd	NT extension that handles SDIs ( <b>Windows NT/2000</b> )
sdirreg.sh	UNIX script that handles SDIs ( <b>UNIX</b> )
SM0webspirs.sh	Startup script that tells WebSPIRS to start automatically with server ( <b>UNIX</b> )
spcore.err	CORE resource file
spcore.rsc	CORE resource file
spsmail	Script that runs the sendmail utility when users e-mail records from WebSPIRS ( <b>UNIX</b> )
spsmail.bat	Batch file that runs the Blat E-mail utility when users e-mail records from WebSPIRS ( <b>Windows NT/2000</b> )
spsubdir	Utility that creates a new subdirectory and copies the files ( <b>webspirs_user.cfg</b> , <b>theme.cfg</b> , <b>erlclnt.cfg</b> , <b>spsmail</b> , <b>sdirreg.sh</b> , and <b>webspirs.net</b> ) needed to create a special WebSPIRS configuration ( <b>UNIX</b> )
spsubdir.bat	Batch file that creates a new subdirectory and copies the files ( <b>webspirs_user.cfg</b> , <b>theme.cfg</b> , <b>erlclnt.cfg</b> , <b>spsmail.bat</b> , <b>sdirreg.cmd</b> , and <b>webspirs.net</b> ) needed to create a special WebSPIRS configuration ( <b>Windows NT/2000</b> )
spworld.ico	“Visit SilverPlatter” icon ( <b>Windows NT/2000</b> )
theme.cfg	Configuration file that controls the appearance of the WebSPIRS interface

<code>uninst.dll</code>	Library file that uninstalls WebSPIRS on Windows NT ( <b>Windows NT/2000</b> )
<code>webspirs</code>	Script that starts, stops and restarts WebSPIRS ( <b>UNIX</b> )
<code>webspirs.net</code>	Configuration file that sets configuration details based on IP address
<code>webspirs.pid</code>	Contains the process ID of the server
<code>webspirs_user</code>	Client program that communicates with the ERL server ( <b>UNIX</b> )
<code>webspirs_user.cfg</code>	Configuration file that sets default values and activates features
<code>webspirs_user.exe</code>	WebSPIRS program that controls connection to the ERL server ( <b>Windows NT/2000</b> )
<code>webspirsd</code>	Main Server daemon that handles all <b>webspirs_user</b> processes ( <b>UNIX</b> )
<code>webspirsd.cfg</code>	Configuration file that sets connection and time-out defaults
<code>webspirsd.exe</code>	Main WebSPIRS program that handles all <b>webspirs_user</b> processes ( <b>Windows NT/2000</b> )
<code>webspirsd.ico</code>	WebSPIRS icon ( <b>Windows NT/2000</b> )
<code>webspirsd.log</code>	Log file created by <b>webspirsd</b>
<code>wig.ico</code>	“WebSPIRS Administrator’s Guide” icon ( <b>Windows NT/2000</b> )
<code>ws_core.dll</code>	Library file used by <b>webspirsd</b> and <b>webspirs_user</b> ( <b>Windows NT/2000</b> )
<code>ws_prim.dll</code>	Library file used by <b>webspirsd</b> and <b>webspirs_user</b> ( <b>Windows NT/2000</b> )
<code>ws_wrap.dll</code>	Library file used by <b>webspirsd</b> and <b>webspirs_user</b> ( <b>Windows NT/2000</b> )

## Connecting to the ERL Server

WebSPIRS uses a configuration file (**erlclnt.cfg**) to connect to the ERL server. This file contains the port number and hostname (or IP address) of the ERL server you specified during installation. (The same configuration file is used for all SilverPlatter SPIRS client software.)

**NOTE:** Unless you specified another hostname (or IP address) during installation, **erlclnt.cfg** points to SilverPlatter’s guest server

(**erl2.silverplatter.com**) by default. You can test your new installation by running WebSPIRS and logging in using *guest* as your username and password. The WebSPIRS Database Selection page appears when you connect, displaying the databases available from the SilverPlatter guest server. (See “Connecting to WebSPIRS with a Browser” on page 5-3 for more information.)

Here is an example of the **erlclnt.cfg** file:

```
/*
/* example
/*
/* server_addr1 = /2/machinename/416
server_addr1 = /2/erl2.silverplatter.com/416
/*
/* Specify server type (use type1 for single
server)
/*
server_type1 = 3
```

In the server address entry (**server\_addr1**):

- 2 indicates a TCP/IP protocol connection.
- **erl2.silverplatter.com** is the hostname of the ERL server that WebSPIRS will connect to. You can use the IP address (*192.80.71.114*, for example) instead of the hostname.
- **416** is the port number assigned to all ERL communications traffic.
- The entry for **server\_type1** is always 3.

**To change any entries or add additional ERL servers to the *erlclnt.cfg* file:**

1. Go to the **webspirs/bin/** directory.
2. Open **erlclnt.cfg** in a text editor.
3. If necessary, change the hostname of the ERL server:

```
server_addr1 = /2/<ERL server hostname>/416
```

If you have more than one server, create additional lines for each one. Increment *n* by one for each server:

```
server_addrn = /2/<additional hostname>/416
```

```
server_typern = 3
```

4. Save **erlclnt.cfg** in text-only format.

**NOTE:** If you connect WebSPIRS to multiple ERL servers, the user account you use must be valid on all the ERL servers listed in the **erlclnt.cfg** file. You cannot use different account details for different servers.

Once WebSPIRS is installed and the **erlclnt.cfg** file is pointing to the appropriate server(s), you can start WebSPIRS. See Chapter 5, “Start and Stop WebSPIRS”.

## Checking Users can View Graphics

If your users will be accessing databases containing graphics in either the records or in the full text, you need to check that they will be able to view these graphics. How this works depends on the operating system, the browser, and any graphics viewing applications already installed. You might wish to use the viewing application that was installed as part of the operating system (on Windows NT/2000), or another application. If you need to configure the browser, note that the graphics used in SilverPlatter databases are MIME Type: image/tif, and require a viewing application that displays tif files.





# Start and Stop WebSPIRS

- Starting and Stopping WebSPIRS for Solaris and Red Hat Linux
  - If you have Trouble Starting, Restarting or Stopping WebSPIRS (Solaris and Red Hat Linux)
- Starting and Stopping WebSPIRS for Windows NT/2000
  - If you get “Access Denied” When You Try to Start the WebSPIRS NT/2000 Service
- Connecting to WebSPIRS with a Browser

Once WebSPIRS is installed and connected to the appropriate server(s), you must start the WebSPIRS process so users can search the databases mounted on the ERL server(s).

## Starting and Stopping WebSPIRS for Solaris and Red Hat Linux

### *To start WebSPIRS for Solaris and Red Hat Linux:*

1. Change to the **/webspirs/bin** directory.
2. Enter **./webspirs start** or **./webspirs restart**.
3. The WebSPIRS program (**webspirsd**) begins running in the background and displays a message.
4. Check your system process status (using the **ps** command) to see the **webspirsd** process running.

As users log on to WebSPIRS, **webspirsd** starts a **webspirs\_user** process for each new user. If you check the system process status

when users are logged on, you will see these **webspircs\_user** processes running.

5. Open the **webspircs.log** file in the **webspircs/bin** directory.

If you see “No permission to set open files to 1024” in the log, the server administrator needs to raise the maximum number of open file descriptors.

**NOTE:** If you have trouble starting, restarting, or stopping WebSPIRS (on Solaris and Red Hat Linux) see “Trouble Starting, Restarting or Stopping WebSPIRS (Solaris and Red Hat Linux)” on page 8-2.

#### ***To stop WebSPIRS for Solaris and Red Hat Linux:***

1. Change to the **/webspircs/bin** directory.
2. Enter **./webspircs stop**.

The **webspircsd** process stops running.

## **Starting and Stopping WebSPIRS for Windows NT/2000**

WebSPIRS is installed as a service on Windows NT/2000 machines. You can start and stop WebSPIRS or change its startup status through the Windows NT/2000 Services dialog box.

#### ***To start and stop WebSPIRS for Windows NT/2000:***

1. Open the Windows NT/2000 Control Panel (**Windows NT/2000 Start menu > Settings > Control Panel**).
2. Click on the **Services** icon to open the Services dialog box.
3. Scroll down the Services column until you find the **webspircsd** service and select it.
4. The Status column contains “Started” when the service is running, and is blank when the service is stopped.
5. Start or stop the service as necessary:
  - Click the **Start** button to start **webspircsd**, or

- Click the **Stop** button to stop it.
6. Close the Services dialog box.

**NOTE:** If you get “Access Denied” When You Try to Start the WebSPIRS NT/2000 Service see ““Access Denied” When You Try to Start the WebSPIRS NT/2000 Service” on page 8-1.

### ***To change the startup status for WebSPIRS:***

1. Open the Windows NT/2000 Control Panel (**Windows NT/2000 Start menu > Settings > Control Panel**).
2. Click on the **Services** icon to open the Services dialog box.
3. Scroll down the Startup column until you find the **webspirsd** service and select it.

The Startup column indicates the current startup status for WebSPIRS (*manual, automatic, or disabled*).

4. Click **Startup...** to open Services dialog box.
5. Select the new startup type.
6. Click **OK** to close the Services dialog box.
7. Close the Services dialog box.

## **Connecting to WebSPIRS with a Browser**

Once you start WebSPIRS, you can use your web browser to test the software and your connection to your ERL server(s).

### ***To connect to WebSPIRS:***

1. Enter the WebSPIRS URL in the browser's address field:

`http://<hostname or IP address>:<port number>`

- Use the hostname (or IP address) and port number you specified during installation. You can use *localhost* for the WebSPIRS

hostname if your browser and WebSPIRS server are running on the same machine.

- Internet Explorer users must include **http://** in the URL.
2. In the standard WebSPIRS installation, the *Welcome to WebSPIRS* page opens, allowing you to login to WebSPIRS. Type the WebSPIRS username and password in the appropriate fields (or accept the default *guest* entries if they are present), then click the **Login to WebSPIRS** button.

The *Select Databases* page opens in a separate browser window, allowing you to open the databases you want to search.

# Configuring WebSPIRS

- Introduction to Configuring WebSPIRS for Different Users
- Creating a Special WebSPIRS Configuration
- Bypassing the WebSPIRS Login Page
- Suggesting a Username at the Login page
- Auto-Opening Databases (Bypassing the Database Selection Page)
- IP Address-based Configuration
- Changing the Appearance of WebSPIRS with Themes
- Setting Up the E-mail Records Feature
- Enabling the SDI (Selective Dissemination of Information) Feature
- Enabling SDI Alerts
- Providing Library Holdings Information
- Enabling Document Delivery
- Setting Default Fields for Display, Print, Save, and E-mail

## Introduction

This section covers a number of common configuration changes you can make to tailor WebSPIRS for your particular environment. For detailed

information about all WebSPIRS configuration options, see Chapter 7, “Configuration Reference”

## Additional Configuration Options in WebSPIRS 4.3

There are some new configuration options in WebSPIRS 4.3. These are listed in the Release Notes, and at “New configuration options for WebSPIRS 4.3” on page 7-1. The configuration options that have changed for SDIs, library holdings, and document delivery are described in the following sections:

- “To filter SDIs according to email address:” on page 6-18
- “Providing Library Holdings Information” on page 6-22
- “Enabling Document Delivery” on page 6-28.

## Introduction to Configuring WebSPIRS for Different Users

WebSPIRS lets you create specialized versions of WebSPIRS for different users. The following list shows just some of the reasons why you might want to do this:

- To make certain features available or unavailable to specific users.
- To limit access to specific databases.
- To create public access accounts. (Using the account name *guest*, for example.)

You make specialized versions of WebSPIRS for different users by creating subdirectories within the **webspirs/bin** directory and editing certain configuration files within those subdirectories. The settings you make in the configuration files in the user subdirectories override the settings in the **webspirs\_user.cfg** and **theme.cfg** files.

**NOTE:** Before you make any configuration changes, we recommend that you create a separate directory where you can test the configuration before enabling the changes for your users.

## Some General Points about Configuring WebSPIRS

### Section Headings

Configuration settings are grouped under separate section headings in each configuration file. These section headings are in the form:

```
[SectionHeading]
```

When you add settings from **webspirs\_user.cfg**, **theme.cfg** or **webspirsd.cfg** to other files (for example, **webspirs.net** or a `<username>.cfg` file), you must add the section heading to the setting name. For example, in **theme.cfg**, the `width.p` setting is in the `[SP.WINDOW]` section. If you want to add this setting to `<username>.cfg`, the full setting name would be:

```
sp.window.width.p.
```

### Commenting Out and Uncommenting Configuration Settings

Many of the configuration settings are optional. When you install WebSPIRS you install a number of configuration files, which have sample entries. It is these files (or copies) that you edit to change the configuration settings. In WebSPIRS, a file setting is “commented out” (that is, it is not active) if the line containing that setting starts with `/*`.

- To uncomment a setting (to make it active), delete the `/*` at the start of the line.
- To comment out a setting (to make it inactive), add `/*` at the start of the line.

## Creating a Special WebSPIRS Configuration

**NOTE:** Before you make any configuration changes, we recommend that you create a separate directory where you can test the configuration before enabling the changes for your users.

### *To create a special WebSPIRS configuration in a separate directory:*

This section explains how to set up a subdirectory called **test**.

1. Use the **spsubdir** (Solaris and Red Hat Linux) or **spsubdir.bat** (Windows NT/2000) utility to create a new subdirectory in the

**/webspirc/bin** directory. For example, to create a subdirectory called **test**, you would enter the following:

On Solaris and Red Hat Linux:

```
./spssubdir test
```

On Windows NT/2000:

```
spssubdir.bat test
```

The utility creates the **/webspirc/bin/test** directory and copies the following files to the new directory:

- **webspirc\_user.cfg**
- **theme.cfg**
- **erlclnt.cfg**
- **webspirc.net**
- **spsmail** (Solaris and Red Hat Linux) or **spsmail.bat** (Windows NT/2000)
- **sdireg.sh** (Solaris and Red Hat Linux) or **sdireg.cmd** (Windows NT/2000)

**NOTE:** The name of the subdirectory becomes part of the URL for the new version of WebSPIRS. WebSPIRS creates **/test/history** and **/test/state** subdirectories automatically when you first access the new version of WebSPIRS. You need to amend the URL to reflect this change, as explained in the next steps.

2. Open the copy of the **webspirc\_user.cfg** file in the new directory.

3. Go to the [SP] section and change:

```
url_directory.p=../url
```

to:

```
url_directory.p=../../url
```

4. Go to the [WWW.CONNECTION] section and do the following:

Comment out the following line:

```
template_directory=../template
```



Uncomment the following line:

```
/*
template_directory=./template,../../template
```

5. Save and close the **webspirc\_user.cfg** file.
6. Edit the copy of **sdireg.sh** (Solaris and Red Hat Linux) or **sdireg.cmd** (Windows NT/2000) file in the new directory.

- If you are using **sdireg.sh**

Change the following line:

```
./webspirc_user ALERT=$1
```

to:

```
../webspirc_user ALERT=$1
```

- If you are using **sdireg.cmd**

Change the following lines:

```
webspirc_user ALERT=%1 >> %SDILOGFILE%
```

to

```
..\webspirc_user ALERT=%1 >> %SDILOGFILE%
```

and

```
sleep
```

to

```
..\sleep
```

7. Windows NT/2000 only: Edit the copy of **spmail.bat** in the new directory, to change the two occurrences of `blat` to `..\blat`.
8. Save and close the file.

You can now use the new URL. For example, if we created the directory **test** above, the URL would be:

```
http://<server name>:<port number>/test/?
```

**NOTE:** Remember the ? at the end.

You now have a separate copy of WebSPIRS which you can configure as necessary. Any configuration changes you make will apply only to this

copy of WebSPIRS and the users you authorize to access the **test** subdirectory.

## Creating a User-Specific WebSPIRS Configuration Based on ERL Username

### Summary

You can offer different configuration settings when a user logs in using a specific ERL username and password. To do this, create an empty file named `<username>.cfg`, where `<username>` is an ERL username. Put the specific settings you want to apply for anyone logging in as `username` into that file.

### What You Do

For example, if you want to offer different settings for users using the ERL username `student`, create an empty file named **student.cfg**.

Put the file either in the `/bin` directory or in the directory you are using to customize WebSPIRS. If you created a test directory (see “To create a special WebSPIRS configuration in a separate directory:” on page 6-3), add the file to that directory. Your users continue to use the same URL as above, but when they log on as `student`, they get the additional customizations you have placed in the file.

You can include any setting found in **webspirc\_user.cfg** or **theme.cfg** or any persistent macro variable used in the templates. If you are using a setting copied from one of the configuration files, make sure you include the section heading for the variable.

1. Open the empty configuration file you created for the user. If the ERL username is `student`, open the empty **student.cfg** file you created.
2. Add any configurations you want to set for the user. For example, if you want to disable the saving of records for ERL user `student`, add the following line to **student.cfg** :

```
sp.save.enabled.p=0
```

**NOTE:** The `sp.save` portion of this setting corresponds to the `[ SP . SAVE ]` section name in **webspirc\_user.cfg**.

3. Save the file.

If someone logs in using the ERL username *student* at the URL `http://<server name>:<port number>/test?` they will find the save function is not available.

## Bypassing the WebSPIRS Login Page

### Summary

You can bypass the *Login* page for your users by entering the ERL username and password in **webspirc\_user.cfg**. If you do this, your users go straight to the *Database Selection* page.

**NOTE:** If you want to bypass Login for some users and not others by detecting the IP address of their browser, you should use IP Address-based Configuration (see “IP Address-based Configuration” on page 6-11) instead of editing **webspirc\_user.cfg**.

### What You Do

**To bypass the Login page and provide a specific username and password:**

1. Go to the [ SP ] section of **webspirc\_user.cfg**.
2. Uncomment the following lines:  

```
username=guest  
password=guest
```
3. Replace *guest* with the desired username and password.

## Suggesting a Username at the Login page

### Summary

When a user starts WebSPIRS, the username and password that appear on the *Login* page are filled in with the values specified in **webspirc\_user.cfg**. The default values are *guest* and *guest*. You can configure WebSPIRS to suggest another username and/or password during login.

For example, you might suggest a default username and password to give users without an account the opportunity to log on to a limited set of databases.

**WARNING:** If you use this feature, the password you suggest will be visible from the user's browser if they choose to view the source HTML for the page.

## What You Do

### *To suggest a username and password at the Login page:*

1. Go to the [ SP ] section of **webspirs\_user.cfg** and locate the following lines:  

```
username . suggest=guest  
password . suggest=guest
```
2. Replace *guest* with the desired username and password. If you do not want to provide a password, leave the `password . suggest=` line blank.

## Auto-Opening Databases (Bypassing the Database Selection Page)

### Summary

If your users (or certain groups of users) always search the same databases, or if you want to present a limited list of databases for selection, you can bypass the *Database Selection* page and have a set of pre-selected databases open automatically. (This is called the “auto-open” feature.)

To auto-open databases, you need to know the Set IDs or Database IDs of the databases you want to open. Database IDs are either four or eight characters long and begin with the Set ID. Generally, if the Database ID is 4 characters long (for example, MLA8), the first two characters represent the Set ID (for example, ML). If the Database ID is eight characters long, the first four characters represent the Set ID.

If you want to open *all volumes* of a database family, you only need to specify its Set ID. If you only want to open *certain volumes* of a database family, you need to specify the entire Database ID of each volume.

## What You Do

There are two steps to this process:

1. Determine the database IDs.
2. Change the configuration file setting.

### **To find out Set IDs and Database IDs:**

1. Login to the ERL server with WebSPIRS.
2. When the *Database Selection* page opens, view the HTML source for the database list frame.
3. Search for the entries starting `<INPUT TYPE="CHECKBOX"`. Each database has such a checkbox entry. Further along in the entry there is a `<A HREF=` tag. At the end of that tag is a string `sp.dbtitle.id=` followed by the ID: E73Y, MBA6, or IU0G, for example. Note down the IDs of each of the databases you want to auto-open.

Once you know the Set IDs and Database IDs, you can edit the appropriate configuration file to auto-open those databases.

### **To change the configuration file:**

1. Open **webspirs\_user.cfg** or `<username>.cfg` (depending on whether you want this to apply to all users, or to a specific sub-set).
2. Edit the file to bypass the WebSPIRS *Database Selection* page:

- If you are using **webspirs\_user.cfg**

In the `[ SP . FORM ]` section, change the following line:

```
first.p=dbmain.htm
```

to:

```
first.p=srchmain.htm
```

- If you are using `<username>.cfg`

Add the following line to the file:

```
sp.form.first.p=srchmain.htm
```

The `sp.form` portion of this setting corresponds to the `[ SP . FORM ]` section name in **webspirs\_user.cfg**.

This tells WebSPIRS to display the *Search* page first after users log in.

3. Add the following line to the configuration file.

**NOTE:** If you are editing the `webspirs_user.cfg` file, you must add the line to the *top* of the file, above the `[ SP ]` section heading.

```
sp.dbid.p=
```

4. Specify the databases you want to auto-open.

If you want to auto-open *all* volumes of a database family, specify the Set IDs in a comma-separated list:

```
sp.dbid.p=S( Set ID ) , S( Set ID )
```

substituting the actual Set ID for *Set ID*.

If you only want to auto-open *specific volumes* of a database family, specify each Database ID (for example, ER5C) using this syntax:

```
sp.dbid.p=Database ID , Database ID
```

**NOTE:** You can mix database sets and individual databases in the same statement by using the following format:

```
sp.dbid.p=S( Set ID ) , I( Database ID )
```

Be sure to separate the terms with commas, and to include S for set IDs and I for database IDs.

WebSPIRS displays these in the order they are in on the ERL server, regardless of the order you put them in here.

**NOTE:** If you have set WebSPIRS up to connect to more than one server, and if the specified database is on two or more servers, WebSPIRS opens the copy on the first server listed.

5. Save and close the configuration file.

When the users of this configuration access WebSPIRS, the databases you specified open automatically.

## Jump-starting users into WebSPIRS

### Summary

You can create a URL so that your users can open WebSPIRS with specific databases open, ready for searching, without using the login and database selection pages. You could attach this URL to a link from a web page, so that users can move easily from your library intranet, for example, to using WebSPIRS.

### What you do

To create the URL, you combine server, login, and database information (linked with an ampersand “&”) to create a URL like this (shown on separate lines for clarity):

```
http://<server_name>:<port_number>/
?sp.username=<name>
&sp.password=<password>
&sp.form.first.p=srchmain.htm&sp.dbid.p=S(ML)
```

## IP Address-based Configuration

### Summary

You can make WebSPIRS configure itself differently according to the IP address of the browser used to access it. Using this feature, you can create different versions of WebSPIRS, letting you set ERL usernames and passwords, set the values of different variables, or even open different databases, all specific to the IP address of the user’s browser.

When you use the **spsubdir** utility to create a configuration subdirectory, a copy of the file **webspirc.net** is copied into that subdirectory. (**webspirc.net** contains comments describing how to use the different sections, so you can copy and paste some of the lines you need.) Because there is a copy of **webspirc.net** in each configuration subdirectory, you can publish one URL (specific to that configuration subdirectory) and then log users on using different ERL usernames and passwords, based on the IP address they are using.

### How it Works

When a browser accesses a WebSPIRS URL, WebSPIRS checks to see if the **webspirc.net** connected with that URL has any entries. If it has, WebSPIRS looks at the [ IPMASKS ] entry, and checks if the IP address for the browser is there. If it is, WebSPIRS notes the label attached to that IP address, and then applies the configuration settings assigned to that label. If the IP address is not covered in the [ IPMASKS ] entry,

WebSPIRS uses the [ DEFAULTCONFIGURATION ] entry. The **webspirc.net** setting overrides any user account name setting in **webspirc\_user.cfg**.

A common way to use **webspirc.net** is to provide different ERL usernames and passwords based on the browser's IP address, then provide *<username>.cfg* files for determining other configuration settings. In that way, you can set the same configurations for all users of the same ERL username, even if some are dialing in from outside your institution and not included among your IP addresses.

## What You Do

### *To set up different configurations based on IP address:*

1. Open the copy of **webspirc.net** in the directory you want to work with.
2. Copy the following line to the end of the file (after the comment lines):

```
# [ DEFAULTCONFIGURATION ]
```

Remove # from the beginning of the line to make the line active. This section will contain the settings used when someone accesses WebSPIRS from an IP address that you did *not* provide.

3. Enter labels for the configurations you intend to provide. For example:
 

```
[ SCIENCE_LIBRARY ]
[ ANTHROPOLOGY ]
```
4. Under each of the labels, type the configuration settings you want to set. You can use any configuration setting found in **webspirc\_user.cfg** or **theme.cfg**.

For example:

```
[ DEFAULTCONFIGURATION ]
sp.username.suggest=guest
sp.password.suggest=guest
sp.history.enabled.p=0

[ SCIENCE_LIBRARY ]
sp.username=science
sp.password=dks88ei
sp.save.enabled.p=0
```



```
[ ANTHROPOLOGY ]
sp.username=anthro
sp.password=iiki99ff
alert.enabled.p=1
```

In this example, a user whose IP address matches [ SCIENCE\_LIBRARY ] is automatically logged in, but is unable to save records. A user whose IP address matches [ ANTHROPOLOGY ] is automatically logged in, and has access to the Alerts feature. A user whose IP address does not match either label, is prompted to enter guest as their username and password, and cannot use the save search history feature.

5. Copy the following line to the end of the file:

```
# [ IPMASKS ]
```

Remove # from the beginning of the line to make the line active. This section is where you put the list of IP addresses.

6. After the [IPMASKS] label, type the IP addresses or IP address masks for each configuration you intend to provide. Type the appropriate label next to each line.

For example:

```
1.26.3.1-1.26.4.255 ANTHROPOLOGY
1.22.4.* SCIENCE_LIBRARY
1.34.22.3 ANTHROPOLOGY
```

7. Save and close the file.

## Changing the Appearance of WebSPIRS with Themes

### Summary

In WebSPIRS, a “theme” is the appearance of the interface, including items like background colors, frame colors, and the default size of the overall window. This information is determined in **theme.cfg**. You can customize the appearance of the WebSPIRS interface by editing **theme.cfg**. As with any customization, if you edit the file in the **/webspirs/bin** directory, the changes you make are global; if you edit the file in a subdirectory of **/webspirs/bin**, only the users with access to that version of the interface are affected.

**NOTE:** If you are using images to create themes, you should be aware of issues regarding the use of copyrighted images, even those available on the Internet.

## About the theme.cfg file

The **theme.cfg** file contains different sections for different areas of the user interface. For example, the *Search* page has a different section than the *Index* page. This means that you can use different colors and background in different areas of the interface. Be sure to test your choices using the browsers and color depths available to your end users before implementing your theme, since WebSPIRS makes no attempt to check your settings against any standards of usability or legibility.

Use **theme.cfg** to change background and link colors to match other offerings at your site, to increase the default window size if your users have better than 640x480 screen resolution, or to add your institution's identifying images.

## What You Do

For example, to replace the WebSPIRS logos with your institution's logo, you would do the following:

1. Open **theme.cfg** or **<username>.cfg** (depending on which WebSPIRS configuration you want to change).
2. Edit the file to include the images you want to use. (**NOTE:** All image files must be stored in the **/webspirs/url/images** directory. Whenever you change the images used in WebSPIRS, we recommend using new images of the same height and width. The dimensions of the large and small WebSPIRS logos are 160x45 and 75x26, respectively.)

- If you are editing **theme.cfg**:

In the [ SP . ICON . IMAGE ] section, find the following lines:

```
large.p=webspirs.gif  
small.p=wsicon.gif
```

Replace **webspirs.gif** and **wsicon.gif** with the image files you want to use instead.

- If you are editing **<username>.cfg**:

Add these lines to the file and specify the image files you want to use:

```
sp.icon.image.large.p=<image file  
name>.gif
```

```
sp.icon.image.small.p=<image file
name>.gif
```

**NOTE:** The `sp.icon.image` portion of each setting corresponds to the `[SP.ICON.IMAGE]` section name in `theme.cfg`.

3. Save and close the file.

**NOTE:** If you change these images, you must restart **webspirsd** for the changes to come into effect.

## Setting Up the E-mail Records Feature

### Summary

When you install WebSPIRS, the e-mail feature is enabled by default. With this feature, WebSPIRS users can send the results of a search to an e-mail address. Depending on your setup, you may need to install or configure other utilities on the WebSPIRS server in order to enable e-mail. Please read the procedure for the platform you are using, and perform any necessary steps.

### What You Do

#### *To enable e-mail:*

1. Open the `webspirs_user.cfg` or `<username>.cfg` file for those users who need e-mail.
2. Set `sp.mailcmd=1`. In `webspirs_user.cfg`, the `mailcmd` variable is in the `[SP]` section.
3. If you are using a Solaris or Red Hat Linux, set `sp.mailcmdname=spmail`.

If you are using Windows NT/2000, set `mailcmdname=spmail.bat`. In `webspirs_user.cfg`, the `mailcmdname` variable is in the `[SP]` section.

4. Save and close the file.

You may also need to edit the mail command batch file to substitute the name of your mail utility for the supplied defaults.

**For Solaris and Red Hat Linux:**

1. Open the file **spmail**. It contains two lines:

```
sendmail $2 <$1  
rm -f $1
```

The script calls the sendmail utility, which sends the file (\$1), consisting of the user's records to the address indicated in \$2. The \$1 file containing the records is then deleted.

2. If you are not using sendmail, change `sendmail` to the name of the mail utility you have installed on the WebSPIRS server. Make any other syntax changes to accommodate that mail utility.
3. Save and close **spmail**.

**For Windows NT/2000:**

WebSPIRS automatically installs **blat.exe** and **spmail.bat** in **/webspirs/bin**. If you want to learn more about Blat, see the Blat home page (<http://gepasi.dbs.aber.ac.uk/softw/blat.html>). If you already have an e-mail service on your WebSPIRS server:

1. Open **spmail.bat** in a text editor. The file contains two lines:

```
blat %1 -t %2 -s %3 del %1
```

The Blat mail program sends the file (%1) to the specified address (%2) with a subject head (%3).

2. Change `blat` to the name of the mail utility you have installed on the WebSPIRS server. Make any other syntax changes to accommodate that mail utility.
3. Save and close **spmail.bat**.

**To disable e-mail:**

1. Open the **webspirs\_user.cfg** or **<username>.cfg** file for those users who should no longer be using e-mail.
2. Set `sp.mailcmd=0`. In **webspirs\_user.cfg**, the `mailcmd` variable is in the `[SP]` section.
3. Save and close the file.

You can also disable e-mail for certain users by IP address by placing `sp.mailcmd=0` into the appropriate section of your **webspirls.net** file.

## Enabling the SDI (Selective Dissemination of Information) Feature

### Summary

The WebSPIRS SDI (Selective Dissemination of Information) feature lets an authorized user save a search and have it rerun automatically, with the results e-mailed to that user. As the administrator, you decide when to run the SDIs.

By default, this feature is disabled. You can enable it for all users, or only for users that use a particular URL, specific ERL username, or those coming from specific IP address ranges.

**NOTE:** The following conditions must apply for SDIs to work:

- WebSPIRS must have e-mail capabilities enabled for the SDI user.
- You must have adequate disk space on the WebSPIRS server to store SDI searches. SDI searches can become fairly large, because they store information about all records that have already been sent. SDI file sizes can vary dramatically (from several K to several MB) depending on the results of the searches involved.

When a user creates an SDI, WebSPIRS creates a baseline of current records that match the search. You can limit the size of this baseline. Then, if a user creates a search that exceeds that number of records, they receive an error warning, and must refine their search further, to return fewer records. This setting is `records.p=` at `[ SP .DEFAULT .ALERT ]` with a default of 1000 records.

**NOTE:** An SDI belongs to the ERL username that set up the SDI. By default, if several users share the same ERL username, they all see all the SDIs set for that username (known as the SDI Account). However, the search results of an SDI are only sent to the e-mail addresses associated with that SDI. Users can add their own email address to an existing SDI, using the Edit SDI feature. (The maximum number of characters that can be entered for email addresses for each SDI is 175 characters. This is sufficient for about 10 email addresses.) All users logging in using a

single ERL username have the same privileges for editing the SDI account.

In WebSPIRS 4.3 administrators can make an additional setting so that when a user displays the SDI Account for their username, they are first asked to enter their email address, and they then only see the SDIs associated with that email address.

**NOTE:** A number of database sets do not work with SDIs because they do not contain unique accession numbers. These are listed in **webspirs\_user.cfg** at

```
[Alert]
exclude.setid.p=.
```

## What You Do

### **To enable the SDI feature:**

1. Open **webspirs\_user.cfg** or `<username>.cfg`, depending on how you want to set up SDI authorizations.

- If you are editing **webspirs\_user.cfg**:

In the [SDI] section, change the following line to this:

```
enabled.p=1
```

- If you are editing `<username>.cfg`:

Add this line to the file:

```
sdi.enabled.p=1
```

**NOTE:** `sdi` corresponds to the [SDI] section name in **webspirs\_user.cfg**.

2. Save and close the file.

**NOTE:** The **webspirs\_user.cfg** section [SP.DEFAULT.ALERT] contains a number of settings that control how SDIs work.

For information about how users set up and use SDIs, see the WebSPIRS online help.

### **To filter SDIs according to email address:**

1. Open **webspirs\_user.cfg** or `<username>.cfg`, depending on how you want to set up SDI filtering.

- If you are editing **webspircs\_user.cfg**:  
In the [SDI] section, change the following line to this:

```
filter.p=1
```

- If you are editing **<username>.cfg**:

Add this line to the file:

```
sdi.filter.p=1
```

**NOTE:** `sdi` corresponds to the [SDI] section name in **webspircs\_user.cfg**.

2. Save and close the file.

When a user clicks the **SDI Account** button, they are prompted to enter their email address. The SDI Account page then only displays SDIs associated with that email address.

### **To run SDIs:**

You decide when, and how often, SDIs are run, and then run them using one of the scripts in the **bin** directory. This means you can run SDIs after you have updated any of your databases, so that your users will receive mail telling them of any new records.

When you run the run SDI script, you must have the same permissions as the account that is running WebSPIRS. (For example, if you run WebSPIRS as account *erl*, you must run the SDIs as account *erl*.)

When you run the scripts, **runsdi.cmd** (on DOS) or **runsdi.sh** (on Solaris and Red Hat Linux) you can include one option:

- The amount of time (in seconds) between the start of each SDI (the default is 60 seconds)

For example, if you wanted to run SDIs using the DOS command, with a two minute gap between each SDI, you would enter the following on the DOS command line:

```
runsdi 120
```

This example command on Solaris or Red Hat Linux would be:

```
runsdi.sh 120
```

You might want to set the file to run automatically, at a time you specify, using `at` (DOS) or `cron` (Solaris and Red Hat Linux). See the documentation for your operating system for help on doing this.

**NOTE:** The `bin` directory also contains three other files that are necessary for SDIs to run: `findsdireg.cmd` and `sdireg.cmd` (DOS) and `sdireg.sh` (Solaris and Red Hat Linux).

**NOTE:** The `runsdi` command starts all SDIs, including any that are suspended. However, when it finds that an SDI is suspended it stops the process, and starts to run the next SDI.

## Enabling SDI Alerts

### Summary

The SDI Alerts feature lets authorized users subscribe to Alerts. An Alert is a special kind of SDI. The search is created by a librarian or WebSPIRS administrator, and saved as an SDI, but instead of just being available to the person who created the SDI, it can be made available to all authorized users, who can choose to subscribe to the Alert. Then, when the Alert is rerun automatically, the latest search results are e-mailed to all subscribers.

By default, this feature is disabled. You can enable it for all users, or only for users that use a particular URL, specific ERL username, or those coming from specific IP address ranges.

**NOTE:** For this to work, WebSPIRS must have e-mail capabilities enabled for the Alerts user.

### What You do

There are three steps to this process:

1. Specify the ERL username that can create Alerts.
2. Create Alerts using the ERL username specified at step one, and using the standard steps to created an SDI.
3. Enable the Alerts feature.
4. Change the configuration file settings.



**To specify the ERL username that can create alerts:**

**NOTE:** By default, WebSPIRS suggests that the account that sets up Alerts is *admin*. However, this is only workable if the ERL username *admin* has a maximum number of logins that is more than one. If you want to restrict the number of users who can log in as *admin*, we suggest you specify a different username to have the right to create alerts.

1. Open **webspircs\_user.cfg** or **<username>.cfg**, depending on how you want to set up Alerts.

- If you are editing **webspircs\_user.cfg**:

In the [ALERT] section, edit the following line to the ERL username that you want to be able to create Alerts:

```
admin.username.p=
```

The default is *admin*.

- If you are editing **<username>.cfg**:

Add this line to the file:

```
alert.admin.username.p=
```

**NOTE:** `alert.` corresponds to the [ALERT] section name in **webspircs\_user.cfg**.

2. Save and close the file.

**To create Alerts:**

The WebSPIRS online help explains how to set up Alerts.

**To let users subscribe to Alerts:**

1. Open **webspircs\_user.cfg** or **<username>.cfg**, depending on how you want to set up Alert authorizations.

- If you are editing **webspircs\_user.cfg**:

In the [Alert] section, change the following line to this:

```
enabled.p=1
```

- If you are editing **<username>.cfg**:

Add this line to the file:

```
alert.enabled.p=1
```

**NOTE:** `alert` corresponds to the [ALERT] section name in `webspirs_user.cfg`.

2. Save and close the file.

### ***To change the configuration settings:***

There are a number of settings you can make to change how the Alerts feature works. These are listed in `webspirs_user.cfg` at:

```
[Alert]
```

## **Providing Library Holdings Information**

You can provide library holdings information to your WebSPIRS users in the following ways:

- You can display holdings messages, from static files generated using the Holdings Conversion Utility (HCU), within SilverPlatter bibliographic records. See “HCU-generated Library Holdings” on page 6-22.
- You can enable the WebSPIRS Web-Link to Holdings feature to link SilverPlatter bibliographic records to corresponding records in your library's web-compatible OPAC or holdings catalog.

You can implement each of these options at your site by configuring the `webspirs_user.cfg` file.

### **HCU-generated Library Holdings**

With HCU-generated holdings, you can display holdings messages within records retrieved from ISSN-based SilverPlatter databases.


Implementing SilverPlatter holdings has the following steps:

1. Create a static file of your serial information.
2. Convert the records using SilverPlatter's HCU.
3. Make the resulting file available on your ERL server.

Full details of how to do this are in the *Holdings Manual*.

## Web-Link to Holdings

The Web-Link to Holdings feature lets you provide a dynamic link from SilverPlatter bibliographic records to corresponding records in your library's web-compatible OPAC or holdings catalog. By linking directly to your library's catalog, users can get the most current holdings information available.

When this feature is enabled, a button  or text link appears within retrieved records. When the user clicks this button or link, WebSPIRS creates a search string made up of the following items:

- The OPAC's URL.
- The search query protocol for performing an ISSN or ISBN search.
- The ISSN or ISBN from the SilverPlatter bibliographic record.

WebSPIRS opens a separate window and uses this search string to search the OPAC and locate matching records.

The web-compatible OPAC must conform to the following list of requirements:

- The ISSN or ISBN number must be indexed in the catalog database, so that searching can take place for those categories.
- The URL used to search the catalog is pre-defined (“static”) so that only the ISSN or ISBN number has to change.

**IMPORTANT:** We have identified certain OPACs in which each search is associated with a dynamically-generated session ID. The Web-Link to Holdings feature is *not* compatible with this type of OPAC search protocol.

**NOTE:** The link can only work with SilverPlatter retrieved records that contain a field for ISSN or ISBN numbers.

**NOTE:** When WebSPIRS creates the HTTP link, it “normalizes” the ISSN or ISBN number in the following way:


- The ISSN includes the hyphen: for example, 0021-9150
- The ISBN number drops the hyphens, for example, 1-85898-469-6 becomes 185898696.

This can affect the compatibility with web-linking, depending on how the numbers are indexed in the OPAC

## What You Do

To implement one or both of the library holdings options, you edit three sections in **webspirs\_user.cfg**:

- The general section, [SP.HOLDINGS], where you specify how you want to implement Library Holdings in WebSPIRS.
- Web-Link to Holdings only:

The [SHOW] section, where you specify whether to use the  button or a text link.

The [VENDOR] section, where you set the following:

- The site you want to link to for holdings information. (In most cases, this will be your library's web-compatible OPAC.)
- The wording for the text link (if you have chosen to use a text link in the [SHOW] section).
- The size of the window that displays the link information.

### **To enable holdings messages or links:**

1. Open the **webspirs\_user.cfg** file you want to customize and go to the [SP.HOLDINGS] section.
2. To display *holdings messages from your HCU-generated holdings files*, if any, make this setting:

```
show.text.p=1
```

You will set up the *circumstances* under which they are displayed later. If you do not have HCU-generated holdings files, this setting will be ignored.

3. To display *links to your web-enabled catalog*, make this setting:

```
show.link.p=1
```

You will set up the *circumstances* under which they are displayed later.


If you do not have a web-based catalog, set:

```
show.link.p=0
```

### **To configure when holdings messages and links will appear:**

1. To make the dynamic link appear *only* if a message for the corresponding citation exists in your static holdings files, make this setting:

```
requires.text.p=1
```

In this case, the  button or text link will not appear unless there is also a record in the HCU-generated holdings file that matches the ISSN in the SilverPlatter record. This reduces the chance that a user will retrieve “0 hits” when they link to the catalog.

To make links appear whether or not a holdings message exists, set:

```
requires.text.p=0
```

**NOTE:** The ability to display a dynamic link only when there is a corresponding entry in the static holdings is only available within ISSN-based SilverPlatter bibliographic records. There is no corresponding feature for ISBN-based records.

2. To display messages from your HCU-generated holdings files in records from *specific* databases only, you must find out the Set IDs of those databases and list them at:

```
text.databases.p=
```

For example, if you want holdings messages to display only in records from Medline databases, enter the following:

```
text.databases.p=ML, MX, MEDS
```

If you want holdings to appear in records from any database, leave this setting blank.

3. To display links to your web-enabled catalog only in records from *specific* databases, you must find out the Set IDs of those databases and list them at:

```
link.databases.p=
```

For example, if you want links to appear only in records from Medline databases, you would type the following:

```
link.databases.p=ML, MX, MEDS
```

If you want links to appear in records from any database, leave the above setting blank.

4. To display links only when a holdings message is available, but you only want this restriction to apply to records from specific databases, you must find out the Set IDs of those databases and list them at:

```
link.requires.text.databases.p=
```

For example, if you want links to appear only in records with holdings messages from Medline databases, you would type the following:

```
link.requires.text.databases.p=ML, MX, MEDS
```

In your other SilverPlatter databases, the link to holdings button will appear regardless of whether a holdings message exists.

If you want links to appear with or without holdings messages in records from any database, leave this setting blank.

### ***To configure Web-Link to Holdings:***

If you are implementing the Web-Link to Holdings feature, you also need to configure the [VENDOR] section of the **webspirs\_user.cfg** file to link to a web-compatible OPAC. (You need to do this even if you are only accessing your own library's OPAC.)

1. If you do not already know the search query details, access the OPAC from a web browser and search for an ISSN number that you know is in the OPAC database.
2. Make a note of the URL that is in the browser's location textbox, and close the browser.
3. Open the **webspirs\_user.cfg** file you want to customize and go to the [SP.HOLDINGS] section.

In this example, the link is set up to an OPAC from "Any college":

4. Make this setting:

```
vendor.p=ANYCOLLEGE
```

5. Change the [VENDOR\_1] section heading to [ANYCOLLEGE].

- At `search.url.p=` specify the base URL for the OPAC. This is that part of the URL (which you noted at step 2) that comes *before* the ISSN number.

For example:

```
search.url.p=http://
anycollege.library.edu/search%3Dbin/
```

- At `search.suffix.p=` specify the part of the URL (which you noted at step 2) that comes *after* the ISSN number.

For example:

```
search.suffix.p=
%26date%3D%26lang%3D%26lib%3D%26form%3DA%2FT%
26id%3D27957%26fs/
```

**NOTE:** For steps 6 and 7, if the URL includes the symbols “&” or “=”, they must be included as their hexadecimal values: %26 and %3D, respectively.


- Set the command string that tells the system to perform a search. For example:

```
command.p=XYZ_Lib+search+open
```

- Set the search format for ISSN and ISBN searches. For example:

```
issn.search.p+=issn+
isbn.search.p+=ke+
```

- Save and close the file.

When a user clicks the  button or a text link in a retrieved record, WebSPIRS builds a search string by combining the OPAC's URL (step 6), the command string (step 8), and the search format (step 7), then searches the OPAC to locate and display matching records in a separate window.

### ***To specify whether to show links with a button or text link:***

- Open the `webspirs_user.cfg` file you want to customize and go to the [SP.SHOW] section.
- To display links using the  button, make this setting:

```
text.order.links=0
```

To display links using a text link, make this setting:

```
text.order.links=1
```

If you choose to display links with a text link, you can configure your own text link by changing the default setting in the [VENDOR] section, at this setting:

```
link.text.p=
```

***To specify the size of the web links window:***

1. Open the **webspirc\_user.cfg** file you want to customize and go to the [VENDOR] section.
2. To change the size of the window in which the OPAC information appears, change these settings:

```
window.width.p=  
window.height.p=
```

## Enabling Document Delivery

### Summary

The Document Delivery feature lets authorized WebSPIRS users order full-text documents from selected document delivery services, or send requests for documents to the library's Inter-Library Loan (ILL) service.

WebSPIRS contains configuration settings for your own ILL librarian and two commercial document suppliers: the British Library Document Supply Center and CISTI. No other commercial document delivery suppliers are supported at present. You need to have accounts with these document suppliers to use this facility.

By default, this feature is disabled. You can enable it for all users, or only for users that use a particular URL, specific ERL username, or those coming from specific IP address ranges.

### What You Do

***To enable Document Delivery:***

1. Open **webspirc\_user.cfg**. In the [DD] section, uncomment the following line:

```
root.spec.directory.p=./docdeliv
```



2. Save and close the file.

**To specify whether to show Order details using a button or text link:**

1. Open the **webspirc\_user.cfg** file you want to customize and go to the [SP.SHOW] section.
2. To display details using the Order button, at the top of the record, make this setting:

```
text.order.links=0
```

To display details using a text link, at the bottom of the record, make this setting:

```
text.order.links=1
```

If you choose to display links with a text link, you can configure your own text link by changing the default setting in the [VENDOR] section, at this setting:

```
link.text.p=
```

**To configure the document providers files:**

1. There is a configuration file for each document supplier (**bl.cfg**, **cisti.cfg**, **ill.cfg**). These are located in the **bin/docdeliv/providers** directory. Open the file for each provider you want to use.
2. Go to [DD.PROVIDER] in each file and specify the e-mail address used by the supplier for document orders. (You should get this information when you set up your account with the supplier.) For example,  

```
destination.p=orders@documentsupplier.com
```
3. Other configuration settings let you control other parts of this feature: for example, you can specify which databases to include in document delivery from a specific supplier. These settings are set out in Chapter 7, “Configuration Reference” section **bl.cfg**, **cisti.cfg**, **ill.cfg**.
4. Save and close each file.

**To configure personal delivery addresses:**

If your users are going to request documents from the British Library Document Supply Centre, you can configure WebSPIRS so they can specify a personal delivery address when they request a document from that Centre. If this is not set, all documents are sent to a single address for the account to which the order is charged. You can either use this feature to display empty address fields for users to fill in, or you can suggest entries for some or all of the fields. Your users can then accept the suggestions, or enter their own text.

1. Open **bl.cfg**.
2. In the [DD.DELIVERY] section turn on the feature for setting address details:

```
method0.allow.address.p=1
```

3. You can set default entries that will appear on the document delivery page, by entering address text (maximum 33 characters) for all or some of the five address fields:

```
method0.address1.p=  
method0.address2.p=  
method0.address3.p=  
method0.address4.p=  
method0.address5.p=
```

4. Save and close the file.

**To configure a single document delivery service**

You can restrict access so that your users can only use one document delivery service.

- Remove the configuration files for any document delivery services you do *not* want to use from the **bin/docdeliv/providers** directory.

**To override document delivery settings for specific users:**

You can restrict the document delivery service to be used, so that when a user with a particular user name requests a document from a specific database, they are given a restricted list of potential suppliers.

1. Create a subdirectory in **bin/docdeliv/users/**, giving the subdirectory the same name as the username.

- Put copies of the configuration files (**bl.cfg**, **cisti.cfg** or **ill.cfg**) with the settings you want to apply to that username, into that subdirectory.

Only enter settings that are different from the values in the default provider files. WebSPIRS reads the default configuration files first, and then reads the files in the user-specific subdirectory, using values in the user-specific files to override the others.

For example, if you want to prohibit user *student* from ordering documents from Medline databases from the British Library Document Delivery Center:

- Create a subdirectory file **bin/docdeliv/users/student**.
- Place a copy of the **bl.cfg** file in the **student** subdirectory. Edit the [DD DATABASES] section:  

```
excluded.p=ML
```
- Save the file. A user logging in with the *student* username will only be able to order a copy of a document referred to in a Medline database from ILL or CISTI: they will not be offered the British Library as an option.

## Setting Default Fields for Display, Print, Save, and E-mail

### Summary

WebSPIRS uses a list of default fields when displaying, printing, saving, and e-mailing records. You can specify the default fields for any of these functions by editing the appropriate field list settings in the [SP.SHOW], [SP.PRINT], [SP.SAVE] or [SP.MAIL] sections of the **webspirs\_user.cfg** file.

**NOTE:** Any settings in the [SP.SHOW]defaults.fields= setting take precedence over any settings at [SP.RECORD]fields.default=

If there are no default fields specified in these sections, WebSPIRS checks for a default field list in the currently open database, if it is an I3-type database. If it is an I1 database, WebSPIRS uses the fields listed in the fields.default.p= setting in the [SP.RECORD] section of the **webspirs\_user.cfg** file.

**NOTE:** WebSPIRS users can always override the default field list for the record display, print, save and e-mail functions by clicking the **Select Fields** button on the *Change Display Options* page.

## What You Do

### *To set the default fields for display, print, save, or e-mail:*

1. Open **webspirls\_user.cfg** or **<username>.cfg**, depending on how you want to set up the default fields.

- If you are editing **webspirls\_user.cfg**:

Go to the appropriate section ([ SP . SHOW ], [ SP . PRINT ], [ SP . SAVE ] or [ SP . MAIL ]) and specify all the default fields you want to use for that function.

For example, if you want to specify default fields for displaying records:

```
[ SP . SHOW ]
default.fields.p=TI,OT,AU,PY, etc.
```

**NOTE:** The order in which you list the default fields has no effect on the order in which they are displayed, printed, saved, or e-mailed. If a field in your default list is not included in a particular database, it will not appear in records retrieved from that database.

- If you are editing **<username>.cfg**:

Add the appropriate setting to the file. For example, if you want to specify default fields for displaying records, enter the following:

```
sp.show.default.fields.p=TI,OT,AU,PY, etc.
```

2. Save and close the file.

# Configuration Reference

This section describes the settings in each of the WebSPIRS configuration files:

- `webspirc_user.cfg`: sets default values and activates features
- `theme.cfg`: sets color and image defaults and default window size
- `webspirc_net`: sets configuration details based on IP address
- `erlcInt.cfg`: determines the ERL servers available to WebSPIRS
- `webspircsd.cfg`: sets connection and time-out details
- `bl.cfg`, `cisti.cfg`, `ill.cfg`: specifies connection details for document delivery providers

For more information on making configuration changes to WebSPIRS, see Chapter 6, “Configuring WebSPIRS”.

If you have installed WebSPIRS over an existing version, see “Installing Over an Earlier Version of WebSPIRS” on page 4-1.

## New configuration options for WebSPIRS 4.3

There are a number of changes, including new configuration options, in WebSPIRS 4.3. The changes are all listed in the Release Notes for

WebSPIRS 4.3. The configuration options are all in **webspirs\_user.cfg** and cover the following items:

Changing the size of the text entry field:	<code>search.show.entry.p=1</code>
Showing search tips when WebSPIRS first opens:	<code>search.show.tips.p=1</code>
Showing a link to a WebSPIRS tutorial:	<code>search.tips.tutorial.url.p=http://www.silverplatter.com/tutor/mainintro.html</code>
Specifying the text label for the WebSPIRS tutorial link:	<code>search.tips.tutorial.text.p =WebSPIRS Tutorial</code>
Specifying the size of the tutorial window:	<code>tutorial.width.p=640</code> <code>tutorial.height.p=450</code>
Changing the browser window in which WebSPIRS opens:	<code>open.location.p=2</code>
Opening a new browser window full-screen:	<code>open.fullscreen.p=1</code>
Specifying the web page to show after logout:	<code>last.p=http://www.silverplatter.com</code>
Specifying how to display document delivery order links and web link to holdings links:	<code>text.order.links.p=1</code>
Specifying the text link for holdings links:	<code>link.text.p=Check Library Holdings</code>
Specifying the size of the holdings window:	<code>window.width.p=550</code> <code>window.height.p=380</code>
Specifying the text link for order links:	<code>link.text.p=Order this Item</code>
Specifying whether to filter SDIs on email address.	<code>filter.p=1</code>
Specifying web pages from which users can access WebSPIRS	<code>from=</code>

## webspirs\_user.cfg

### Usage:

Controls default values and turns WebSPIRS features on and off. If you create specialized WebSPIRS configurations, this file is copied from **webspirs/bin** to each custom directory by the **spsubdir** utility.

If you have worked with earlier versions of WebSPIRS you will notice that there is no longer a [ ] section at the end of this file.

### Sections:

- [SP] interface defaults
- [SP.FORM] template settings
- [SP.RECORD] record display settings
- [SP.PERM] Thesaurus display settings
- [SP.FSI] Index display settings
- [SP.SUGGEST] Suggest feature settings
- [SP.TOC] Table of Contents (for full text databases) display settings
- [SP.FINDRELDB] Find Relevant Databases Feature display settings
- [SP.LANGUAGE] language limits for the Search page
- [SP.SHOW] record display settings
- [SP.PRINT] print defaults
- [SP.SAVE] save defaults
- [SP.MAIL] e-mail defaults
- [SP.HISTORY] search history settings
- [SP.SILVERLINKER] display settings
- [SP.HOLDINGS] library holdings settings
- [VENDOR\_1] library holdings settings

- [WWW.CONNECTION] connection settings
- [SP.STATE] state file defaults
- [DEFAULT] template defaults
- [DEBUG] logging and error message defaults
- [ERL] default server settings
- [CORE] default core settings
- [MM] default settings
- [CRERRORS] default error messages
- [DD] Document Delivery settings
- [SP.DEFAULT.ALERT] SDI settings
- [SDI] SDI settings
- [ALERT] SDI/Alerts settings.

<b>[SP] section (webspirs_user.cfg)</b>	
<code>/*username=guest</code> <code>/*password=guest</code>	Uncomment these lines (remove the <code>/*</code> ) to bypass the <i>Login</i> page. See Bypassing the WebSPIRS Login Page
<code>username.suggest=guest</code> <code>password.suggest=guest</code>	Suggested values for the <b>User name</b> and <b>Password</b> fields on the <i>Login</i> page. See Suggesting a Username at the Login page
<code>webspirs.imagdir.p=/images/</code>	Specifies the location of the WebSPIRS image files. (This setting is prepended to the <code>htdocs_directory</code> setting in the <b>webspirsd.cfg</b> file.)
<code>webspirs.jsdir.p=/javascript/</code>	Specifies the location of the WebSPIRS javascript (.js) files. New in WebSPIRS 4.2



webspirs.theme.p=theme.cfg	Specifies the name of the visual theme configuration file.
window.width.p=620 window.height.p=400	Specifies the default width and height of the main WebSPIRS window if nothing is read from the <b>theme.cfg</b> file.
help.width.p=410 help.height.p=400	Specifies the default width and height of the WebSPIRS Help window if nothing is read from the <b>theme.cfg</b> file.
mailcmd=1	Turns the E-mail Records feature on and off. <b>1</b> = enabled (default) <b>0</b> = disabled See Setting Up the E-mail Records Feature
mailcmdname=spmail	Specifies the e-mail script that WebSPIRS uses. See Setting Up the E-mail Records Feature
comments.email.p= comments.linktext.p=	Lets you enter an e-mail address and link text so users can submit comments about WebSPIRS. The link text appears on the opening WebSPIRS page.
support.email.p= support.linktext.p=	Lets you enter an e-mail address and link text so users can submit support questions about WebSPIRS. The link text appears on the opening WebSPIRS page.
search.url.fields.p= AU,SO,NM,JN,NU:SH,RN:AUS,RN:A UF	Specifies the fields that will turn into hotlinks. Syntax: =< <b>set ID</b> >:< <b>field list</b> >. Specify the set ID if there is a field of the same name in a different database and that field is not suitable to turn into a link.
search.url.fields.exclude.p= NU:SO,IR:SO	Specifies the fields that will <b>not</b> turn into hotlinks. Syntax: =< <b>set ID</b> >:< <b>field list</b> > Specify the set ID if there is a field of the same name in a different database and that field is suitable to turn into a link.

<p>thesaurus.id.equivalent.p=  PS:PY:PL:PX:CY:KM,MESH:MX:  MAWE:ML:MPAN:MY:MPCA:MC:  MPDE:MF:MPGA:MQ:MPGG:G1:  MPNE:NE:MPOC:MO:MPOG:MPOP:  OP:MPOR:MG:MPPD:M1:MPPS:  M4:MPRO:MP:MPSU:MW:CNLT:CN:  CNSP:3C:HPLN:AIDL:BIET,AR:  ARIS:FN:FNUT,EMBX:E1:ELPS:  EP:ELDR:ED:ELPH:LP:ELPD:  EW,CABI:CAGE:CABE:CROP:  CAEQ:CAFO:CAFA:CAHE:CHOR:  CAPA:CBUG:CGEN:CSOD:CAVT,GE:  SJ:NP</p>	<p>Specifies if two or more database tags are equivalent (that is, they are from the same physical thesaurus.) This makes the thesaurus available when two databases, which are from different families but use the same thesaurus, are searched.</p>
<p>errors.sent.to.administrator.p=1</p>	<p>Sends all the error messages seen by users to the WebSPIRS administrator. Uses the e-mail address specified in the administrator.email.p= setting.</p>
<p>administrator.email.p=</p>	<p>E-mail address of the WebSPIRS administrator.</p>
<p>url_directory.p=../url</p>	<p>Specifies the base directory for URLs.  See Creating a Special WebSPIRS Configuration</p>
<p>alternate.link.text.p=</p>	<p>Message text to show if user is using an unsupported web browser.</p>
<p>alternate.link.url.p=</p>	<p>Specifies the location of an earlier version of WebSPIRS (for older browsers).</p>
<p>webspirs.version=</p>	<p>The current WebSPIRS version number. Do not change this setting.</p>
<p>search.show.py.limits.p=0</p>	<p>Displays publication year check boxes so users can limit their search by publication year.</p> <p><b>1</b> = enabled  <b>0</b> = disabled (default)</p>
<p>search.show.entry.p=1</p>	<p>Specifies whether to display single-line or double-line text entry field on main search page.</p> <p><b>1</b> = double (default)  <b>0</b> = single</p> <p>New in 4.3</p>

<pre>search.show.tips.p=1</pre>	<p>Specifies whether to display search tips on main search page when user first logs on. When this option is set, users can toggle between displaying the search tips and their Search History.</p> <p><b>1</b> = display (default)</p> <p><b>0</b> = do not display</p> <p>New in 4.3</p>
<pre>search.tips.tutorial.url.p=http://www.silverplatter.com/tutorial/mainintro.html</pre>	<p>Specifies the web page to display when a user chooses the WebSPIRS Tutorial link. (The default URL is to the tutorial on the SilverPlatter web site. Administrators can change this to a local copy, or to their own tutorial file.)</p> <p>New in 4.3</p>
<pre>search.tips.tutorial.text.p=WebSPIRS Tutorial</pre> <pre>search.tips.tutorial.text_f.p=Didacticiel WebSPIRS</pre> <pre>search.tips.tutorial.text_g.p=WebSPIRS Online Tutorial</pre> <pre>search.tips.tutorial.text_s.p=Tutorial de WebSPIRS</pre>	<p>Specifies the text link to display if there is a URL at <code>search.tips.tutorial.url.p=</code></p> <p>New in 4.3</p>
<pre>tutorial.width.p=640</pre> <pre>tutorial.height.p=450</pre>	<p>Specifies the size of the window displaying the tutorial.</p> <p>New in 4.3</p>
<pre>open.location.p=2</pre>	<p>Specifies whether to open WebSPIRS as in WebSPIRS 4.2, in the current browser window, or in a new, independent window.</p> <p><b>0</b> = open as for WebSPIRS 4.2. In a new independent window, with the window from which the user launched WebSPIRS containing a "Bring it Back" button</p> <p><b>1</b> = open in current browser window (browser buttons available)</p> <p><b>2</b> = open in new browser window (without browser buttons) (default)</p> <p>New in 4.3</p>

open.fullscreen.p=1	<p>If open.location.p=2, this setting specifies whether to open the new window at full-screen size.</p> <p><b>1</b> = full screen (default)</p> <p><b>0</b> = same size as initial browser window</p> <p>New in 4.3</p>
from=	<p>Set this so users can only start WebSPIRS from a link on a specific web page. This is useful if you run WebSPIRS in a portal environment.</p> <p>Enter one or more web page locations (<a href="http://www.mylibrary.com/menu">http://www.mylibrary.com/menu</a>, for example). Separate multiple locations with commas, but with no spaces.</p> <p>You do not need to enter the complete URL. If you set the domain name only, (<a href="http://www.mylibrary.com">http://www.mylibrary.com</a>, for example) WebSPIRS accepts a user who is using a link from any web page in that domain.</p> <p>New in 4.3</p>
<b>[SP.FORM] section (webspirs_user.cfg)</b>	
last.p=http://www.silverplatter.com	<p>Specifies the web page to display when a user logs out.</p> <p>If open.location.p=2, this page displays in the initial browser window as soon as the user opens WebSPIRS.</p> <p>New in 4.3</p>
first.p=dbmain.htm	<p>Specifies the first template to display after the main WebSPIRS window and the toolbar.</p> <p>See Auto-Opening Databases (Bypassing the Database Selection Page)</p>
password.p=exppw.htm	<p>Specifies the template to display if the user's password has expired.</p>
search.p=srchmain.htm	<p>Specifies the template to display for the <i>Search</i> page.</p>
error.p=error.htm	<p>Specifies the template to display for errors.</p>
hotlink.p=fullmain.htm	<p>Specifies the target template for hotlinks.</p>

<b>[SP.RECORD] section (webspirs_user.cfg)</b>	
howmany.list.p= 1,10,20,30,40,50,100	Lists the choices users have for the number of records displayed at one time.
howmany.p=10	Specifies the default number of records displayed at one time.
fields.default.p= CITN,RES,*LHM,*LHC,AB,TI, AU,FTXT,TIME,PAGE,DATE,SOC, PUB1,PUB2,CNTL	Specifies a list of "default" fields for displaying, saving, printing, and mailing records. (I1-type databases only.) If empty, all fields are displayed.
linelength.p=80	Specifies the line length for wordwrapping when saving and e-mailing records. Minimum value = 20.
<b>[SP.PERM] section (webspirs_user.cfg)</b>	
howmany.list.p=2,5,10,20	Lists the choices users have for the number of thesaurus terms displayed at one time.
howmany.p=5	Default setting for the number of thesaurus terms displayed at one time.
<b>[SP.FSI] section (webspirs_user.cfg)</b>	
howmany.list.p=10,20,40,80	Lists the choices users have for the number of Index terms displayed at one time.
howmany.p=20	Default setting for the number of Index terms displayed at one time.
<b>[SP.SUGGEST] section (webspirs_user.cfg)</b>	
max.records.p=30 sig.threshold.p=2 stop.record.count.p=20	Default settings for the Suggest feature. There is no need to change these settings.
<b>[SP.TOC] section (webspirs_user.cfg)</b>	
show.if.unavailable.p=0	Determines whether the Table of Contents button displays when the feature is unavailable.  1 = enabled  0 = disabled (default)

<b>[SP.FINDRELEDB] section (webspirs_user.cfg)</b>	
<code>enable.p=1</code>	Turns the Find Relevant Databases feature on and off. <b>1</b> = enabled (default) <b>0</b> = disabled
<b>[SP.LANGUAGE] section (webspirs_user.cfg)</b>	
<code>option1.p=English</code> <code>option2.p=French</code> <code>option3.p=Spanish</code> <code>option4.p=German</code> <code>option5.p=Italian</code> <code>option1.name.p=anglais</code> <code>option2.name.p=français</code> <code>option3.name.p=espagnol</code> <code>option4.name.p=allemand</code> <code>option5.name.p=italien</code>	Specifies the language checkboxes that appear on the <i>Search</i> page. <b>NOTE:</b> Language checkboxes only appear if that language is found in the Language field of an open database.
	Specifies the labels that appear next to the checkboxes on the <i>Search</i> page. In this example the checkboxes appear with the languages in French.
<b>[SP.SHOW] section (webspirs_user.cfg)</b>	
<code>records.p=1</code>	Turns the Immediate Record Display feature on and off. When enabled, WebSPIRS displays retrieved records immediately after each search. Users can toggle this feature on or off from the <i>Change Display Options</i> page. <b>1</b> = enabled (default) <b>0</b> = disabled
<code>intermediate.results.p=0</code>	Turns the display of intermediate search results on and off. When enabled, WebSPIRS displays the search results for each term in a search request. Users can toggle this feature on or off from the <i>Change Display Options</i> page. <b>1</b> = enabled <b>0</b> = disabled (default)
<code>results.by.db.p=0</code>	Turns the display of search results according to database on and off. When enabled, WebSPIRS displays database names in search results. Users can toggle this feature on or off from the <i>Change Display Options</i> page. <b>1</b> = enabled <b>0</b> = disabled (default)

records.labels.p=SHORT	Specifies the kind of record field labels to display ( <b>SHORT</b> , <b>LONG</b> , or <b>BOTH</b> )
default.fields.p=CITN,*SHW,*LHM,*LHC,AB,FTXT	<p>Specifies a list of default display fields.</p> <p>See Setting Default Fields for Display, Print, Save, and E-mail</p> <p><b>CITN</b> Citation. This is a group of fields specific to the current database. (Likely to include items like author, title, journal, as well as other information.)</p> <p><b>*SHW</b> This is similar to CITN, but applies to a different group of databases. (Not all databases have this, but the field is included as a default.)</p> <p><b>*LHM</b> Library holdings messages. For when you have enabled local library holdings.</p> <p><b>*LHC</b> Library call number. For when you have enabled local library holdings.</p> <p><b>AB</b> Abstract</p> <p><b>FTXT</b> Full text. For when your server is enabled to use SilverLinker for accessing full text records.</p>
db.menu.checkboxes.p=0	<p>Turns the display of heading icons on the <i>Select Databases</i> page on and off. If heading icons are enabled, users can click them to select all databases under a particular heading.</p> <p><b>1</b> = enabled</p> <p><b>0</b> = disabled (default)</p> <p>Changed in WebSPIRS 4.2</p>
text.order.links.p=1	<p>Specifies how to display document delivery order links and web link to holdings links.</p> <p><b>1</b> = Text links at the bottom of the record.</p> <p><b>0</b> = A document delivery Order button at the top of the record, and a Check for Holdings button at the bottom of the record (default).</p> <p>New in 4.3</p>
<b>[SP.PRINT] section (webspirs_user.cfg)</b>	
max.records.p=100	Specifies the maximum number of records users can print at one time.

<code>default.fields.p=</code>	<p>Specifies a list of default fields for printing.</p> <p>If the setting is blank, WebSPIRS checks the database for a default field list. If the database does not have one, it looks for a <code>sp.record.fields.default.p=</code> setting in a <code>&lt;username&gt;.cfg</code> file.</p>
<code>history.p=YES</code>	<p>Includes or excludes the search history in printed records.</p> <p><b>YES</b> = include search history (default) <b>NO</b> = exclude search history</p>
<code>recnums.p=YES</code>	<p>Includes/excludes record numbers in printed records.</p> <p><b>YES</b> = include record numbers (default) <b>NO</b> = exclude record numbers</p>
<b>[SP.SAVE] section (webspirs_user.cfg)</b>	
<code>enabled.p=1</code>	<p>Turns the Save Records feature on or off.</p> <p><b>1</b> = enabled (default) <b>0</b> = disabled</p>
<code>default.fields.p=</code>	<p>Specifies a list of default fields for saving.</p> <p>If the setting is blank, WebSPIRS checks the database for a default field list. If the database does not have one, it looks for a <code>sp.record.fields.default.p=</code> setting in a <code>&lt;username&gt;.cfg</code> file.</p>
<code>history.p=YES</code>	<p>Includes or excludes the search history in saved records.</p> <p><b>YES</b> = include search history (default) <b>NO</b> = exclude search history</p>
<code>recnums.p=YES</code>	<p>Includes or excludes record numbers in saved records.</p> <p><b>YES</b> = include record numbers (default) <b>NO</b> = exclude record numbers</p>
<code>wordwrap.p=NO</code>	<p>Causes lines longer than n characters to wrap. The character limit is specified by the <code>linelength.p=</code> setting in the [SP.RECORD] section.</p>



<code>delete.time=4</code>	Specifies the maximum number of hours that files downloaded using Internet Explorer will remain in the download directory before they are automatically deleted.
<b>[SP.MAIL] section (webspirs_user.cfg)</b>	
<code>max.records.p=100</code>	Specifies the maximum number of records users can e-mail at one time.
<code>default.fields.p=</code>	Specifies a list of default fields for e-mailing. If the setting is blank, WebSPIRS checks the database for a default field list. If the database does not have one, it looks for a <code>sp.record.fields.default.p=</code> setting.
<code>history.p=YES</code>	Includes or excludes the search history in e-mailed records. <b>YES</b> = include search history (default) <b>NO</b> = exclude search history
<code>recnums.p=YES</code>	Includes or excludes record numbers in e-mailed records. <b>YES</b> = include record numbers (default) <b>NO</b> = exclude record numbers
<code>wordwrap.p=NO</code>	Causes lines longer than n characters to wrap. The character limit is specified by the <code>linelength.p=</code> setting in the [SP.RECORD] section.
<b>[SP.HISTORY] section (webspirs_user.cfg)</b>	
<code>enabled.p=1</code>	Turns the Save Search History feature on or off. <b>1</b> = enabled (default) <b>0</b> = disabled
<code>max.days=730</code>	Specifies the maximum number of days a user can specify before a search history expires.
<code>expiration.days=365</code>	Specifies the default number of days until a search history expires.
<code>grace.days=60</code>	Specifies the number of days search histories remain on the system after expiration but before deletion.

<b>[SP.SILVERLINKER] section (webspirs_user.cfg)</b>	
<code>format=SELECT</code>	<p>Controls how links are displayed:</p> <p><b>SELECT:</b> display a dropdown listbox when the number of links for a record is equal to, or more than, the <code>format.select.min=</code> setting. Otherwise use text links.</p> <p><b>TEXT:</b> Always use text with button links.</p>
<code>format.select.min=2</code>	<p>Any record with a number of links equal to, or more than, this setting displays a dropdown listbox. If the number of links is less than this setting, the record displays text with button links.</p>
<b>[SP.HOLDINGS] section (webspirs_user.cfg) See Providing Library Holdings Information</b>	
<code>show.text.p=1</code>	<p>Turns the display of "static" library holdings messages on or off. (All databases)</p> <p><b>1</b> = enabled (default)</p> <p><b>0</b> = disabled</p>
<code>show.link.p=0</code>	<p>Turns the display of a library holdings link on or off. (All databases)</p> <p><b>1</b> = enabled</p> <p><b>0</b> = disabled (default)</p>
<code>requires.text.p=0</code>	<p>Set to 1 if you only want library holdings links to appear in records that also have holdings messages. (All databases)</p> <p><b>1</b> = enabled</p> <p><b>0</b> = disabled (default)</p>
<code>text.databases.p=</code>	<p>List specific databases to show library holdings messages.</p>
<code>link.databases.p=</code>	<p>List specific databases to show library holdings links.</p>
<code>link.requires.text.databases.p=</code>	<p>List specific databases to show library holdings links only in records that also have holdings messages.</p>
<code>link.fieldlist.p=ISSN,IS,ISBN,IB,SN</code>	<p>Lists the fields to be checked for ISSN or ISBN numbers for the holdings link searches.</p>

vendor.p=	Specifies the provider of the web-enabled OPAC or holdings system.  Other vendor details are specified in the <b>Vendor_1</b> section.
<b>[Vendor_1] section (webspirs_user.cfg)</b> See Providing Library Holdings Information	
search.url.p=	Specifies the URL of the OPAC system.
search.suffix.p=	Specifies the part of the URL that locates the holdings information.
link.graphic.p=cfh1.gif	Specifies the “link to holdings” graphic that appears in records.  If you are using the Check for Holdings button in alternative language versions, set this to <b>f_cfh1.gif</b> , <b>g_cfh1.gif</b> , or <b>s_cfh1.gif</b> , as appropriate.
link.text.p=Check Library Holdings link.text_f.p=Vérification des archives link.text_g.p=Auf Bestände prüfen link.text_s.p=Comprobar Fondos	Specifies the text to display for holdings links. (Maximum 50 characters.)  New in 4.3
window.width.p=550 window.height.p=380	Specifies the size of the window displaying holdings information.  New in 4.3
command.p=	Specifies the command string required before a search term.
issn.search.p=	Portion of the OPAC URL used for ISSN searching.
isbn.search.p=	Portion of the OPAC URL used for ISBN searching.
<b>[WWW.CONNECTION] section (webspirs_user.cfg)</b>	
connection_wait=600000	Specifies the wait (in milliseconds) before a WebSPIRS connection will time-out. The default is 10 minutes.
template_directory=../template	Specifies the path to the WebSPIRS templates.  <b>NOTE:</b> If you have multiple WebSPIRS configuration directories, use the following setting instead.

<code>/*template_directory= ./template,..../template</code>	Uncomment this line if you have multiple WebSPIRS configuration directories. See <a href="#">Creating a Special WebSPIRS Configuration</a>
<code>usefilecontext=1</code>	Used internally by WebSPIRS. DO NOT CHANGE.
<code>userdirectory=./state</code>	Where WebSPIRS state files are stored.
<code>historydirectory=./history</code>	Where WebSPIRS history files are stored.
<b>[SP.STATE] section (webspirs_user.cfg)</b>	
<code>delete.time=4</code>	Specifies the maximum number of hours state files remain in the <b>/state</b> directory before they are automatically deleted. This is only triggered when a user clicks the Logout button.
<b>[DEFAULT] section (webspirs_user.cfg)</b>	
<code>sp.nextform=webspirs.htm</code>	Specifies the template to display if <code>sp.nextform</code> is not specified in a request.
<b>[DEBUG] section (webspirs_user.cfg)</b>	
<code>log_requests=no</code>	Turns request logging on and off. <b>YES</b> = enabled <b>NO</b> = disabled (default)
<code>javascript.show.errors.p=1</code>	Turns the display of JavaScript error messages on and off. <b>1</b> = enabled (default) <b>0</b> = disabled
<b>[ERL] section (webspirs_user.cfg)</b>	
<code>ERLCLIENT=1 ERLONLY=1 ERLPATH= DXP_WARNINGS=1 ClientID=SP\$WEBSPIRS\$4.2 /*MSGLOG=</code>	Internal WebSPIRS settings: do not change

<b>[CORE] section (webspirs_user.cfg)</b>	
DEBUG=0 MAGDRIVE=0 StructuredDBList=1 maxfiles=12 filestoleave=2	Internal WebSPIRS settings: do not change
<b>[MM] section (webspirs_user.cfg)</b>	
VM_REQUIRED=1500000 VM_DESIRED=4000000 DEBUG_LEVEL=0	Internal WebSPIRS settings: do not change
<b>[CRERRORS] section (webspirs_user.cfg)</b>	
1= 2= ... 30=	Default error messages.
<b>[DD] section (webspirs_user.cfg)</b>	
<code>/*root.spec.directory.p=./doc deliv</code>	Uncomment this line (remove the <code>/*</code> ) to turn the Document Delivery feature on. This setting specifies the location of the Document Delivery directory relative to the <b>webspirs/bin</b> directory. See Enabling Document Delivery
<code>template.choice.p= ddchoicemain.htm</code>	Specifies the default template to use for the Document Delivery page when there is more than one Document Delivery provider.
<code>template.edit.p= ddordermain.htm</code>	Specifies the default template to use to get to the interface for a particular Document Delivery provider.
<code>template.send.p=ddsend.htm</code>	Specifies the default template to use when sending Document Delivery orders.
<code>provider.show.sorted.p=</code>	Specifies the order in which Document Delivery providers are listed on the <i>Order Document</i> page. Type the name corresponding to the provider's configuration file ( <b>bl.cfg</b> , <b>cisti.cfg</b> , or <b>ill.cfg</b> ). For example:  <code>provider.show.sorted.p=ill,bl,cisti</code>

<pre>link.text.p=Order this Item link.text_f.p=Commander link.text_g.p=Bestellen link.text_s.p=Solicitar</pre>	<p>Specifies the text to display for document order links. (Maximum 50 characters.)</p> <p>New in 4.3</p>
<p><b>[SP.DEFAULT.ALERT] section (webspirs_user.cfg)</b> See Enabling the SDI (Selective Dissemination of Information) Feature</p>	
<pre>export.recnums.p=1 record.labels.p=1 label.format.p=SHORT</pre>	<p>Controls the format of e-mailed SDI records.</p>
<pre>suspend.p=0 notify.p=On hit</pre>	<p>Internal WebSPIRS variables. Do not change.</p>
<pre>records.p=1000</pre>	<p>Specifies the maximum number of hits allowed for creating an SDI baseline search.</p>
<p><b>[SDI] section (webspirs_user.cfg)</b> See Enabling the SDI (Selective Dissemination of Information) Feature</p>	
<pre>enabled.p=1</pre>	<p>Turns the SDI feature on and off.</p> <p><b>1</b> = enabled</p> <p><b>0</b> = disabled (default)</p>
<pre>filter.p=1</pre>	<p>Specifies whether to filter SDIs on email address. If enabled, when a user clicks the SDI Account button they are asked to enter their email address. The SDI Account page then only displays the SDIs associated with that email address.</p> <p><b>1</b> = enabled (default)</p> <p><b>0</b> = disabled</p> <p>New in 4.3</p>
<p><b>[ALERT] section (webspirs_user.cfg)</b> See Enabling the SDI (Selective Dissemination of Information) Feature</p>	
<pre>enabled.p=1</pre>	<p>Enables/disables the Alerts feature.</p> <p><b>1</b> = enabled</p> <p><b>0</b> = disabled (default)</p>
<pre>admin.username.p=admin</pre>	<p>Specifies the name of the ERL Administrator account. SDIs created under this username will be Alerts that end users can subscribe to.</p>

<code>exclude.setid.p= AS,TS,IF,GB,TE,GG, LO,AT,AD,MN,PT,PG</code>	Specifies the database Set IDs that will not work with SDIs/Alerts.
<code>MAX.DAYS=180</code>	Specifies the maximum number of days an SDI will be on the system before expiring.
<code>grace.days=60</code>	Specifies the number of days an SDI will remain on the system past the expiration date before it is deleted.
<code>alternate.an.field.ha=NO alternate.an.field.pb=EN alternate.an.field.si=CN alternate.an.field.cr=RN alternate.an.field.wl=ID alternate.an.field.uk=RN</code>	Specifies AN field name equivalents used by particular database Set IDs.

## theme.cfg

### Usage:

Controls colors and backgrounds used throughout the WebSPIRS interface. Sets default window size of the main window. If you create specialized WebSPIRS configurations, this file is copied from **webspirs/bin** to each custom directory by the **spsubdir** utility.

### Sections:

- [SP.WINDOW] sets default size of the main WebSPIRS browser window
- [SP.ICON.IMAGE] sets product image filenames
- [SP.OPENING.PAGE] sets colors for pages displayed in the main browser window, such as Login, Session in Progress, and Logout
- [SP.TOOLBAR] sets colors for the pages loaded into the toolbar frame
- [SP.DATABASE] sets colors used on the Database Selection, Find Relevant Databases, and SDI pages
- [SP.DBTITLE] sets colors used on the Database Title Information page.
- [SP.DBINFO] sets colors used on the window displayed after the Database Information button is pressed
- [SP.SEARCH] sets colors used on the main Search page
- [SP.BUILDER] sets colors used on the Search Builder page
- [SP.HISTORY] sets colors for all the pages involved in loading, displaying, and editing saved searches, and in editing settings for saved searches
- [SP.RECORD] sets colors used for all the pages involved in displaying records, and for the print, save, and e-mail pages
- [SP.CHGDISP] sets colors for the Change Display Options and Select Fields pages.
- [SP.INDEX] sets colors used on the Index page



- [SP.THES] sets colors used on the Thesaurus and Suggest pages
- [SP.TOC] sets colors used on the Database Table of Contents page
- [SP.MESSAGE] sets colors used on the pages in the Message of the Day window
- [SP.ORDER], [SP.ALERT] currently blank

<b>[SP.WINDOW] section (theme.cfg)</b>	
width.p	Default window width, in pixels. If your end-users may be using 640x480 (VGA) resolution, we recommend a value of <b>620</b> .
height.p	Default window height, in pixels. If your end-users may be using 640x480 (VGA) resolution, we recommend a value of <b>400</b> .
<b>[SP.ICON.IMAGE] section (theme.cfg)</b>	
large.p	Filename of the large product icon, seen in the upper left corner of main pages such as Search, Index, Thesaurus, etc.
small.p	Filename of the small product icon, seen in the upper left corner of pages shown in separate windows, such as print, help, full record, etc. Also used at the bottom of pages shown in the main browser window.
<b>[SP.OPENING.PAGE] section (theme.cfg)</b>	
body.p	HTML parameters for the <b>BODY</b> tag, including the hexadecimal value of the background color.
<b>[SP.TOOLBAR] section (theme.cfg)</b>	
frame.color.p	Color of the frame border. Set to the same color as the <b>BGCOLOR</b> parameter of the <b>BODY</b> tag.
body.p	HTML parameters for the <b>BODY</b> tag, including the hexadecimal value of the background color. By default, this is a medium blue color.
<b>[SP.DATABASE] section (theme.cfg)</b>	
frame.color.p	Color of the frame border. Set to the same color as the <b>BGCOLOR</b> parameter of the <b>BODY</b> tag of the pages used in this frameset.
header.body.p	HTML parameters for the <b>BODY</b> tag of the header page, including the hexadecimal value of the background color.
middle.body.p	HTML parameters for the <b>BODY</b> tag of the database list page, including the hexadecimal value of the background color.

<code>frd.header.body.p</code>	HTML parameters for the <b>BODY</b> tag of the header page for find relevant databases, including the hexadecimal value of the background color.
<b>[SP.DBTITLE] section (theme.cfg)</b>	
<code>frame.color.p</code>	Color of the frame border of the pages loaded into title page window. Set to the same color as the <b>BGCOLOR</b> parameter of the <b>BODY</b> tag of the pages used in this frameset.
<code>header.body.p</code>	HTML parameters for the <b>BODY</b> tag of the header page, including the hexadecimal value of the background color.
<code>middle.body.p</code>	HTML parameters for the <b>BODY</b> tag of the title page, including the hexadecimal value of the background color.
<b>[SP.DBINFO] section (theme.cfg)</b>	
<code>frame.color.p</code>	Color of the frame border. Set to the same color as the <b>BGCOLOR</b> parameter of the <b>BODY</b> tag of the pages used in this frameset.
<code>header.body.p</code>	HTML parameters for the <b>BODY</b> tag of the header page, including the hexadecimal value of the background color.
<code>topic.body.p</code>	HTML parameters for the <b>BODY</b> tag of the list of topics page, including the hexadecimal value of the background color.
<code>text.body.p</code>	HTML parameters for the <b>BODY</b> tag of the individual topic page, including the hexadecimal value of the background color.
<b>[SP.SEARCH] section (theme.cfg)</b>	
<code>frame.color.p</code>	Color of the frame border for both the main search page and the history frame. Set to the same color as the <b>BGCOLOR</b> parameter of the <b>BODY</b> tag of the pages used in this frameset.
<code>header.body.p</code>	HTML parameters for the <b>BODY</b> tag of the main search page, including the hexadecimal value of the background color.
<code>middle.body.p</code>	HTML parameters for the <b>BODY</b> tag of the history pages, including the hexadecimal value of the background color.
<b>[SP.BUILDER], [SP.HISTORY], [SP.CHGDISP], [SP.INDEX], [SP.TOC], [SP.MESSAGE] (theme.cfg)</b>	
<code>frame.color.p</code>	Color of the frame border for the page. Set to the same color as the <b>BGCOLOR</b> parameter of the <b>BODY</b> tag of the pages used in this frameset.

header.body.p	HTML parameters for the <b>BODY</b> tag of the header page, including the hexadecimal value of the background color.
middle.body.p	HTML parameters for the <b>BODY</b> tag of the main page, including the hexadecimal value of the background color.
<b>[SP.RECORD] section (theme.cfg)</b>	
frame.color.p	Color of the frame border for the framesets used in the print, save, and e-mail windows. Set to the same color as the <b>BGCOLOR</b> parameter of the <b>BODY</b> tag of the pages used in this frameset.
header.body.p	HTML parameters for the <b>BODY</b> tag of the header page of the records display page and full record window, including the hexadecimal value of the background color.
middle.body.p	HTML parameters for the <b>BODY</b> tag of the page where records are displayed, including the hexadecimal value of the background color.
toc.body.p	HTML parameters for the <b>BODY</b> tag of the full record table of contents page, including the hexadecimal value of the background color.
doc.body.p	HTML parameters for the <b>BODY</b> tag of the page displaying the selected section of a full text document, including the hexadecimal value of the background color.
print.body.p	HTML parameters for the <b>BODY</b> tag of the header and body of the print page, including the hexadecimal value of the background color.
save.body.p	HTML parameters for the <b>BODY</b> tag of the header and body of the save page, including the hexadecimal value of the background color.
email.body.p	HTML parameters for the <b>BODY</b> tag of the header and body of the e-mail page, including the hexadecimal value of the background color.
<b>[SP.THES] section (theme.cfg)</b>	
frame.color.p	Color of the frame border for the framesets used in the Thesaurus and Suggest pages. Set to the same color as the <b>BGCOLOR</b> parameter of the <b>BODY</b> tag of the pages used in this frameset.
header.body.p	HTML parameters for the <b>BODY</b> tag of Suggest and Thesaurus permuted list header pages, including the hexadecimal value of the background color.
middle.body.p	HTML parameters for the <b>BODY</b> tag of the Suggest and Thesaurus permuted list terms pages, including the hexadecimal value of the background color.

<code>detail.header.body.p</code>	HTML parameters for the <b>BODY</b> tag of the Thesaurus detail header page, including the hexadecimal value of the background color.
<code>detail.middle.body.p</code>	HTML parameters for the <b>BODY</b> tag of the Thesaurus detail page, including the hexadecimal value of the background color.
<code>subhead.header.body.p</code>	HTML parameters for the <b>BODY</b> tag of the select thesaurus subheadings header page, including the hexadecimal value of the background color.
<code>subhead.middle.body.p</code>	HTML parameters for the <b>BODY</b> tag of the select thesaurus subheadings page, including the hexadecimal value of the background color.

## webspirs.net

### Usage:

Lets you set specific configuration values based on the IP address of the user. You can set any variable used in **webspirs\_user.cfg** or **theme.cfg**. If you create specialized WebSPIRS configurations, this file is copied from **webspirs/bin** to each custom directory by the **spsubdir** utility.

The URL you set determines which **webspirs.net** file is used to filter the addresses. For example, the URL:

```
http://lib.xyz.edu:8590/?
```

uses the **webspirs.net** stored by default in the **webspirs/bin** directory.

The URL:

```
http://lib.xyz.edu:8590/science?
```

uses the **webspirs.net** stored in **webspirs/bin/science**. If you want all your configuration directories to use the file stored in **webspirs/bin**, then remove the **webspirs.net** file from the **webspirs/bin/science** directory.

Create your own customizations by adding lines to the end of **webspirs.net**. The following sections are used (**NOTE**: Order is important.):

[ DEFAULTCONFIGURATION ]	Indicates the configuration variables that are set when the IP address does not match any of the masks you provide in the [ IPMASKS ] group. This group must be in the first line of your configuration.
[ ALPHACONFIGURATION ], [ BETACONFIGURATION ], etc.	Indicates the configurations groups you are providing. They can be named any single-word name you choose. Refer to them in the [ IPMASKS ] group.
[ IPMASKS ]	Associates IP masks and IP addresses to configuration groups. Separate the IP mask from the group name by at least one space character. This group must be the last group in the file.

## erlclnt.cfg

### Usage:

Determines which ERL database servers are opened by WebSPIRS. This file is identical in format to the file of the same name used in WinSPIRS.

By default, this file contains the name of the SilverPlatter guest server in Norwood, USA. For more details about editing this file, see [Connecting to the ERL Server](#).

**NOTE**: If your users will have simultaneous access to more than one server, the ERL username and password on each server must be the same for each user. You cannot log in with more than one ERL username and/or password at a time.

## webspirsd.cfg

### Usage:

Sets configuration and defaults for **webspirsd**, the main executable file for WebSPIRS. It is located in the **webspirs/bin** directory by default. Only one **webspirsd.cfg** file is used for a single WebSPIRS installation. If you edit this file while **webspirsd** is running, you will need to restart it.

**Sections:**

- [WWW] specifies what ports to use
- [WWW.DISPATCHER] identifies the connections and connection wait times for user processes
- [TIMEOUT] determines the time-outs for partial requests and when the user process is busy
- [DEBUG] turns logging on and off
- [IMMUTABLE] identifies variables that cannot be reset by other configuration files like **webspirs\_user.cfg**, any template file, or URL specification

<b>[WWW] section (webspirsd.cfg)</b>	
no_http_redirects=1	Setting this to 1 makes <b>webspirsd</b> return image files on GET requests. Setting this to 0 makes <b>webspirsd</b> forward those requests to the web specified by the <code>mainHttpServer</code> and <code>mainHttpServerPort</code> setting.
mainHttpServer=	Specifies the hostname of the web server used to handle image requests if <code>no_http_redirects=0</code> .
mainHttpServerPort= =	Specifies the port used by <code>mainHttpServer</code> if <code>no_http_redirects=0</code> .
htdocs_directory=. ./url	The relative path from the directory where WebSPIRS executables are stored ( <b>webspirs/bin</b> by default) to the directory that contains the images directory ( <b>webspirs/url</b> by default).
port=8590	The port used by WebSPIRS to receive requests from the user's browser. This was set during installation. This port must not be in use by any other processes on the server. We recommend using a port number over 8000, but any number can be used.
request_port=8591 request_name=:8591	The port used by <b>webspirsd</b> to communicate with user processes. This should be set to one number higher than <code>port</code> . Both variables <b>must</b> use the same number. (Note the colon.)
user_name=	If running WebSPIRS on a privileged port (1024 or lower), this specifies the username you want WebSPIRS to switch to after starting as <i>root</i> . <b>(UNIX only)</b>

<b>[WWW.DISPATCHER] section (webspirsd.cfg)</b>	
connection_process = webspirs_user	The name of the process spawned for each user. Do not reset this value.
number_of_connections=50	Maximum number of user processes to spawn. Set this value high enough to accommodate your users, but low enough not to overload your server.
connection_wait=180000	Number of milliseconds that <b>webspirsd</b> waits until it hears a response from the user process. Default is 3 minutes.
pid_file=webspirs.pid	Filename of the file that contains the process ID of the <b>webspirsd</b> process. Do not reset this value.
<b>[TIMEOUT] section (webspirsd.cfg)</b>	
restOfResponse=40	Number of seconds that <b>webspirsd</b> waits after getting a partial response from a user process.
restOfRequest=4	Number of seconds that <b>webspirsd</b> waits after getting a partial response from the browser.
browserResponse=20	Number of seconds that <b>webspirsd</b> waits for a single chunk of data to be read by the browser. 20 seconds is the default.
adultBusy=1	Number of seconds to wait before attempting to connect to <b>webspirs_user</b> again if the <b>webspirs_user</b> process was busy with another request for a particular user.
adultConnect=6	Number of seconds that <b>webspirsd</b> waits for an acknowledgment after connecting to a user process.
adultIdle=600	Number of seconds an idle <b>webspirs_user</b> process runs before being stopped by <b>webspirsd</b> . (Default = 10 minutes)
<b>[DEBUG] section (webspirsd.cfg)</b>	
log_forms=no	Indicates whether or not WebSPIRS should log all the forms that are sent to the browser. <b>no</b> =do not log forms (default) <b>yes</b> =log all forms in <b>webforms.log</b>
log_requests=no	Indicates whether or not WebSPIRS should log <i>all</i> requests. <b>no</b> =do not log requests (default) <b>yes</b> =log all requests in <b>rawreq.log</b>

<code>log_images=no</code>	Indicates whether or not WebSPIRS should log <i>all</i> images and javascript file requests. <b>no</b> =do not log requests (default) <b>yes</b> =log all requests in <b>image.log</b> New in WebSPIRS 4.2
<b>[IMMUTABLE] section (webspirsd.cfg)</b>	
<code>attributes= immutable.attribut es</code>	The values of variables in this list cannot be modified by other configuration files or in templates. <b>Add values for security reasons.</b>



## bl.cfg, cisti.cfg, ill.cfg

**Usage:** Sets Document Delivery configuration details for your own ILL librarian and two commercial document suppliers: the British Library Document Supply Center (<http://portico.bl.uk/services/bsds/dsc/>) and CISTI (<http://www.nrc.ca/cisti/>). These files are located in the **webspirs/bin/docdeliv/providers** directory by default. See “Enabling Document Delivery” on page 6–28.

**Sections:** There is one file for each of the document suppliers. You make the settings that are relevant for your organization in the file for whichever of the document suppliers you want to use. You can use one, or two, or all three suppliers. Each file contains the following sections:

- [DD.PROVIDER] specifies provider information
- [DD.DATABASES] specifies the variables that determine if a record is eligible for delivery by a particular provider
- [DD.DELIVERY] specifies delivery method information

<b>[DD.PROVIDER] section (bl.cfg, cisti.cfg, ill.cfg)</b>	
<code>display.text.p=</code>	Specifies the name of the Document Delivery provider (for example, “British Library Document Supply Center”).
<code>image.p=</code>	Specifies the Document Delivery provider's logo (for example, <b>intlib.gif</b> )
<code>protocol.p=mail</code>	Specifies how WebSPIRS communicates with the Document Delivery provider.
<code>destinatation.p=</code>	Enter the provider's e-mail address to activate this Document Delivery provider. (You should get this information when you open an account with your document supplier.)
<code>format.template.p=</code>	Specifies the template used to format a request for a particular provider (for example, <b>cistiformat.htm</b> ).
<code>format.&lt;Set ID&gt;.template.p=</code>	Specifies the template to use, overriding the default format template ( <code>format.template.p=</code> ), for a specific Set ID.

<b>[DD.DATABASES] section (bl.cfg, cisti.cfg, ill.cfg)</b>	
<code>included.p=</code>	If database Set IDs are cited here, only records from those databases are eligible for document delivery. Otherwise, records from all databases are eligible.
<code>excluded.p=UM</code>	Records from database Set IDs listed here are never eligible for document delivery.
<code>fields.to.check.p=</code>	Records (from eligible database Set IDs) that contain these fields are eligible for document delivery and will display the <b>Order</b> button.  The field short names are used to represent the fields and the following operators are used to represent inclusion, exclusion, etc.
Operator , Name AND	If two or more field names are separated by a comma they are all required to make the Order button appear. For example:  <code>fields.to.check.p=IS,JN,SO</code>  shows the <b>Order</b> button only if the record has an IS, JN, and SO field.
Operator : Name OR	Often different databases will have different field names for the same piece of information. In this case you want the order button to appear if either one OR the other field name is present. This is accomplished by separating the possible field names with a colon. For example:  <code>fields.to.check.p=IS:ISSN:SN</code>  shows the <b>Order</b> button for this provider if the record has an IS, an ISSN, or an SN field.  All OR operations are done before any AND operations. For example:  <code>fields.to.check.p=IS:ISSN:SN,JN,SO</code>  shows the <b>Order</b> button if the record has one (or more) of IS, ISSN, or SN in addition to a JN, and an SO field.  If it appears before a “,” or at the end of the variable definition it will be checked on all fields that precede it back to the previous “,” or if there is no “,” back to the beginning of the variable definition. These require that the field, or fields if we have a “:”, meet certain conditions.
Operator !{ Name DOES NOT INCLUDE	This allows the <b>Order</b> button to appear only if the text that follows is not in the field. For example:  <code>fields.to.check.p=IS:ISSN:SN!{ISBN</code>  shows the <b>Order</b> button if the record has an IS, an ISSN, or an SN field and none of those fields has the text ISBN within the field.

Operator {{ Name INCLUDES	This only allows the <b>Order</b> button to appear if the text that follows is in the field. For example:  fields.to.check.p=IS:ISSN:SN{ { ISBN  shows the order button if the record has an IS, an ISSN, or an SN field and that field has the text ISBN within the field.
Operator != Name NOT EQUAL	This only allows the Order button to appear if the text that follows is in the field (or fields if we have ":"). For example:  fields.to.check.p=IS:ISSN:SN!=ISBN  shows the order button if the record has an IS, an ISSN, or an SN field and that field is not equal to the text ISBN.
Operator == Name EQUAL	This only allows the Order button to appear if the text that follows is in the field (or fields if we have ":"). For example:  fields.to.check.p=IS:ISSN:SN==ISBN  shows the order button if the record has an IS, an ISSN, or an SN field and that field is equal to the text ISBN.
	<b>Combined example:</b>  fields.to.check.p= ISSN:SN:NU:JN:DO:SC:IS! { ISBN, SO:JNO:JI:JN, TI  shows the <b>Order</b> button for this provider if the record contains all of the following:  An ISSN, SN, NU, JN, DO, SC or an IS field, and that field does not contain the text ISBN  An SO, JNO, JI, or a JN field  A TI field
fields.to.send.p=	Specifies the fields that will be displayed on the document order form and sent to the provider with the order. For example,  BK, SO, AU, CF, TI, ST, SE, BN, IB, ISBN, IS, ISSN, SN, PY, AA, AD, CA, CN, CO, CP, DE, IN, LA, MESH, MJ, MN, NT, OT, PR, PS, RF, TB, TC, TP, UT, NU

<b>[DD.DELIVERY] section (bl.cfg, cisti.cfg, ill.cfg)</b>	
<code>methodn.name.p=</code>	Specifies the name associated with a particular delivery method (for example, "fax," "electronic mail," "courier," "interoffice mail," "airmail"). Each method name has its own template, comments, required fields, and blank fields entries.
<code>methodn.template.p=</code>	Specifies the template used for the order form associated with a particular delivery method (for example, <b>cistielec.htm</b> ).
<code>methodn.comments.p=</code>	Comments about the delivery.
<code>methodn.required.fields.p=</code>	Specifies the form fields required by the <code>methodn.template.p=</code> template. The user sees these fields with a "Required" stamp.
<code>methodn.blank.fields.p=</code>	Specifies the form fields to be cleared after document orders are sent.
<b>bl.cfg only:</b>	
<code>methodn.allow.address.p=</code>	Set this to 1 to let users specify their own address for delivery, by filling in additional text boxes.
<code>methodn.addressn.p=</code>	Enter up to five lines ( <code>address1</code> to <code>address5</code> ) of address text to display when users choose to request a document from the British Library. Users can accept the address text, or enter their own.

# Troubleshooting

- “Access Denied” When You Try to Start the WebSPIRS NT/2000 Service
- The Server Stops Responding with Multiple Simultaneous Users
- Trouble Starting, Restarting or Stopping WebSPIRS (Solaris and Red Hat Linux)
- Trouble Opening WebSPIRS with Netscape Navigator
- Pages Not Loading Completely/JavaScript Errors Because of Bad Modem Connection
- Port Conflict Message on WebSPIRS Start-up
- Complete WebSPIRS Page Not Displayed (Internet Explorer Only)
- Pressing Login Button, No Response
- Table of Contents Not Displayed for a Full-Text Database

## “Access Denied” When You Try to Start the WebSPIRS NT/2000 Service

If you get an “Access Denied” message when you try to start the WebSPIRS NT/2000 Service, the server cannot locate **webspirsd.exe**.

The Windows NT/2000 Service Manager truncates directory names to 8.3 format. This causes a conflict with the default WebSPIRS NT/2000 installation path (**C:\Program Files\SilverPlatter Information\WebSPIRS\bin\webspirsd.exe**), especially if you have

WebSPIRS 3.1 installed in its default directory (**C:\Program Files\SilverPlatter\WebSPIRS**) on the same machine. Try installing WebSPIRS 4.3 to another directory.

## The Server Stops Responding with Multiple Simultaneous Users

1. Check the **webspirsd.log** file in the **webspirs/bin** directory.
2. If a message appears indicating that there are too many open files, raise the number of open file descriptors for the user account running WebSPIRS. For example, on Solaris you might type:

```
ulimit -n 1024
```

3. Save and close the file.

## Trouble Starting, Restarting or Stopping WebSPIRS (Solaris and Red Hat Linux)

If you have trouble starting, restarting or stopping WebSPIRS, there may be more than one **ps** command on your system or the command may not be in your path.

1. Open the **webspirs** script in the **webspirs/bin** directory and find the following line:

```
PSCMD="ps -ef"
```

2. Edit the line to include the *exact path* to the **ps** command. For example, if the command is in the **/bin** directory:

```
PSCMD="/bin/ps -ef"
```

3. Save and close the file.

## Trouble Opening WebSPIRS with Netscape Navigator

JavaScript Error:

```
http://www.your_server.com:8000/login, line
1168:
missing } in compound statement.
// Turn off all child checkboxes one lev
.....^
```

If you get the above error message when you try to open WebSPIRS with Netscape Navigator, you may be using the unsupported 16-bit version.

**To find out what version you are using:**

- Open Netscape Navigator and select **About Plug-ins** from the **Help** menu.
- If the file name is **NPNUL16.DLL**, you are running the 16-bit version of Netscape Navigator. In order to use WebSPIRS 4.3, you must upgrade to one of the supported web browsers listed at “WebSPIRS System Requirements” on page 3-1 ”

## Pages Not Loading Completely/JavaScript Errors Because of Bad Modem Connection

A bad modem connection could prevent WebSPIRS from loading pages completely and result in JavaScript errors. If your users connect to WebSPIRS using a modem, you may want to configure WebSPIRS to bypass the *Login* page (see “Bypassing the WebSPIRS Login Page” on page 6-7) (as it tends to take longer to load) and auto-open specific databases (see “Auto-Opening Databases (Bypassing the Database Selection Page)” on page 6-8.)

**NOTE:** Bypassing the *Login* and *Database Selection* pages may reduce the occurrences of this problem for modem users, but it may not eliminate the problem completely.

For more information, refer to “Configuring WebSPIRS” on page 6-1.

## Port Conflict Message on WebSPIRS Start-up

If a “failed to bind on port# (number)” message is displayed when you start WebSPIRS (**webspirsd**), there is a port number

conflict. In Solaris and Red Hat Linux, use the **process** command to see what processes are running. One of the following conditions may have occurred:

- WebSPIRS is already running and using that port number. You can try stopping and restarting WebSPIRS to clear up the conflict.
- In some cases, you may find that a port number is hung, but no process is using it. In this case, wait for 15 to 20 minutes for the port to time out and then try starting WebSPIRS.
- Another process is using the port number. In this case, you can change the port number used by WebSPIRS:

1. Change to the **webspird/bin** directory and open the **webspird.cfg** file in a text editor.
2. Locate these lines in the file:

```
port=8590
request_port=8591
request_name=:8591
```

(Note the colon.)

3. Change the `port` number to another number (we recommend a number over 8000).
4. Change `request_port` and `request_name` to a number that is **one greater** than the port number.

**NOTE:** Both `request_port` and `request_name` must have the same number.

5. Save and close the file.
6. Try restarting WebSPIRS.

## Complete WebSPIRS Page Not Displayed (Internet Explorer Only)

For Internet Explorer users and in some conditions, portions of a WebSPIRS page may not load. To display the complete page you can



press a button in the toolbar to go to another page of the interface. Then, return to the page on which the problem occurred. The full page should then be displayed.

## **Pressing Login Button, No Response**

If a user gets no response when they click on the Login button, check to make sure JavaScript is enabled in their browser.

## **Table of Contents Not Displayed for a Full-Text Database**

If a user opens the Table of Contents while searching a full-text database and the Table of Contents does not display, make sure that Java is enabled in their browser.



# Technical Support

- By Email
- By Telephone
- SilverPlatter Web Site

## Contacting SilverPlatter

To learn more about SilverPlatter software, or if you have any queries about installing and running the WebSPIRS software, please contact us in one of the following ways:

### By Email

[support@silverplatter.com](mailto:support@silverplatter.com)

### By Telephone

Call your SilverPlatter distributor, or one of the following SilverPlatter Technical Support teams:

#### **For the Americas, Japan, Australia, and the Pacific:**

##### **Boston Office:**

Tel: 1-781-769-2599  
1-800-343-0064 (US/Canada)

Fax 1-781-769-8763

#### **For Europe, Africa, Middle East, and South Asia:**

##### **London Office:**

Tel: +44 (0)20-8585-6400  
0800-262-096 (UK)

Fax: +44 (0)20-8585-6640

**Amsterdam Office:**

Tel: +31 (0) 20 6259650

Fax: +31 (0) 20 6237408

**Berlin Office:**

Tel: +49 30-85 77 99-0

Fax: +49 30-85 77 99-99

**For Asia:**

**Hong Kong Office**

Tel: 852 2529 0356

Fax: 852 2804 2746

**SilverPlatter Web Site** <http://www.silverplatter.com>